

21.07.2008 20:05 - 23.07.2008 11:17

MS SQL Server 2000/2005/2008



MSSQLServerTransactionSimulationTest [alex] SQL Server Connect Time (usec)	n/a	n/a	n/a	n/a	n/a	2348		
MSSQLServerTransactionSimulationTest [alex] SQL Operation Time (usec)	n/a	n/a	n/a	n/a	n/a	2348		
MSSQLServerTransactionSimulationTest [alex] Total Transaction Time (usec)	n/a	n/a	n/a	n/a	n/a	2348		
MSSQLServerTransactionSimulationTest [vPro] SQL Server Connect Time (usec)	n/a	n/a	n/a	n/a	n/a	2347		
MSSQLServerTransactionSimulationTest [vPro] SQL Operation Time (usec)	n/a	n/a	n/a	n/a	n/a	2347		
MSSQLServerTransactionSimulationTest [vPro] Total Transaction Time (usec)	n/a	n/a	n/a	n/a	n/a	2347		
	89,4%	→	94,5%	→	99,1%	→	99,4%	2348

(2)

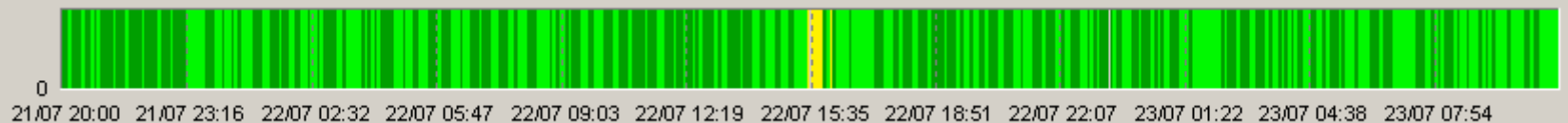
ProLAN

ProLAN.

PROLAN,

PROLAN
PARTNER@PROLAN.RU

« »



21.07.2008 20:05 - 23.07.2008 11:17

MS SQL Server 2000/2005/2008



MSSQLServerTransactionSimulationTest [sla-on-server1] SQL Server Connect Time (usec)	n/a	n/a	n/a	n/a	n/a	2348
MSSQLServerTransactionSimulationTest [sla-on-server1] SQL Operation Time (usec)	n/a	n/a	n/a	n/a	n/a	2348
MSSQLServerTransactionSimulationTest [sla-on-server1] Total Transaction Time (usec)	n/a	n/a	n/a	n/a	n/a	2348

89,4% → 94,5% → 99,1% → 99,4% 2348

(2)

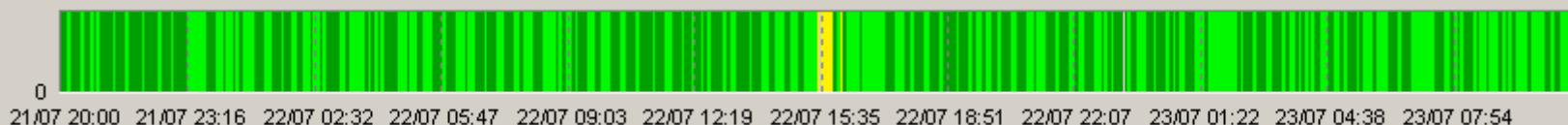
ProLAN

ProLAN.

PROLAN,

PROLAN
PARTNER@PROLAN.RU

« »



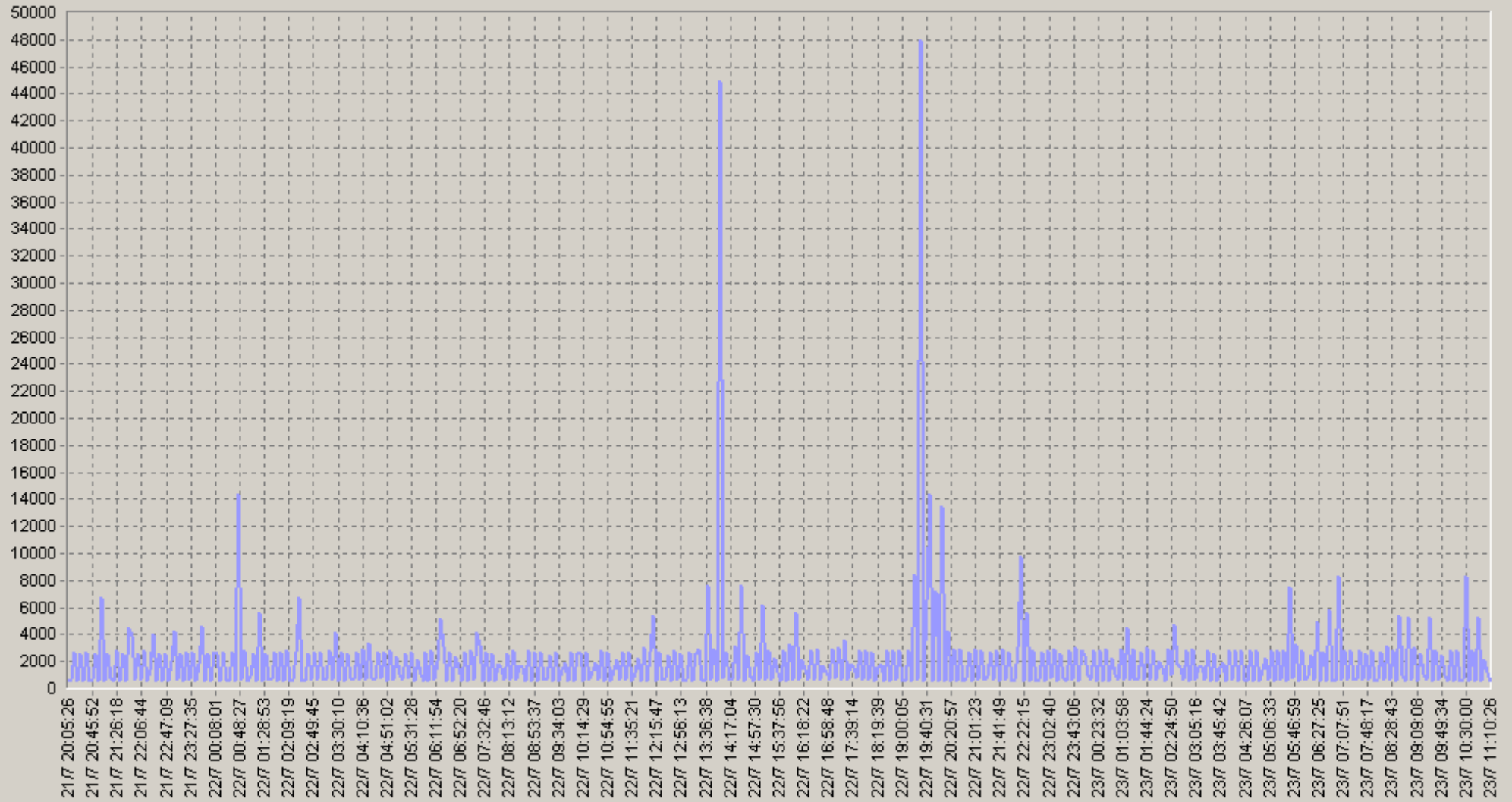
0 21/07 20:00 21/07 23:16 22/07 02:32 22/07 05:47 22/07 09:03 22/07 12:19 22/07 15:35 22/07 18:51 22/07 22:07 23/07 01:22 23/07 04:38 23/07 07:54

PROLAN

MS SQL Server 2000/2005/2008

21.07.2008 20:05 - 23.07.2008 11:17

MSSQLServerTransactionSimulationTest.[alex] SQL Server Connect Time (usec)



— MSSQLServerTransactionSimulationTest.[alex] SQL Server Connect Time (usec)(SLA-ON-SERVER1)

MS SQL Server 2000/2005/2008

21.07.2008 20:05 - 23.07.2008 11:17

20. MSSQLServerTransactionSimulationTest.[alex] SQL Server Connect Time (usec)

		75<	90<			75<	90<
00:00-00:20	1 677 n/a	672 n/a	949 n/a	06:00-06:20	1 687 n/a	663 n/a	831 n/a
00:20-00:40	1 675 n/a	655 n/a	867 n/a	06:20-06:40	2 468 n/a	658 n/a	10 561 n/a
00:40-01:00	3 167 n/a	626 n/a	847 n/a	06:40-07:00	2 555 n/a	606 n/a	712 n/a
01:00-01:20	1 383 n/a	651 n/a	804 n/a	07:00-07:20	1 419 n/a	649 n/a	886 n/a
01:20-01:40	2 045 n/a	686 n/a	922 n/a	07:20-07:40	2 203 n/a	675 n/a	886 n/a
01:40-02:00	1 712 n/a	640 n/a	1 274 n/a	07:40-08:00	1 656 n/a	667 n/a	807 n/a
02:00-02:20	1 435 n/a	638 n/a	827 n/a	08:00-08:20	1 464 n/a	706 n/a	797 n/a
02:20-02:40	2 753 n/a	959 n/a	10 848 n/a	08:20-08:40	1 451 n/a	719 n/a	886 n/a
02:40-03:00	1 149 n/a	621 n/a	691 n/a	08:40-09:00	2 353 n/a	628 n/a	839 n/a
03:00-03:20	1 718 n/a	694 n/a	1 071 n/a	09:00-09:20	1 703 n/a	722 n/a	896 n/a
03:20-03:40	1 853 n/a	650 n/a	785 n/a	09:20-09:40	1 481 n/a	624 n/a	754 n/a
03:40-04:00	1 434 n/a	675 n/a	831 n/a	09:40-10:00	1 667 n/a	612 n/a	834 n/a
04:00-04:20	1 445 n/a	640 n/a	832 n/a	10:00-10:20	1 666 n/a	637 n/a	883 n/a
04:20-04:40	1 792 n/a	692 n/a	1 142 n/a	10:20-10:40	2 077 n/a	679 n/a	775 n/a
04:40-05:00	1 719 n/a	646 n/a	1 228 n/a	10:40-11:00	1 996 n/a	643 n/a	10 773 n/a
05:00-05:20	1 176 n/a	665 n/a	766 n/a	11:00-11:20	1 503 n/a	639 n/a	793 n/a
05:20-05:40	1 681 n/a	652 n/a	1 114 n/a	11:20-11:40	1 652 n/a	639 n/a	823 n/a
05:40-06:00	2 337 n/a	663 n/a	922 n/a	11:40-12:00	1 720 n/a	611 n/a	821 n/a

MS SQL Server 2000/2005/2008

21.07.2008 20:05 - 23.07.2008 11:17

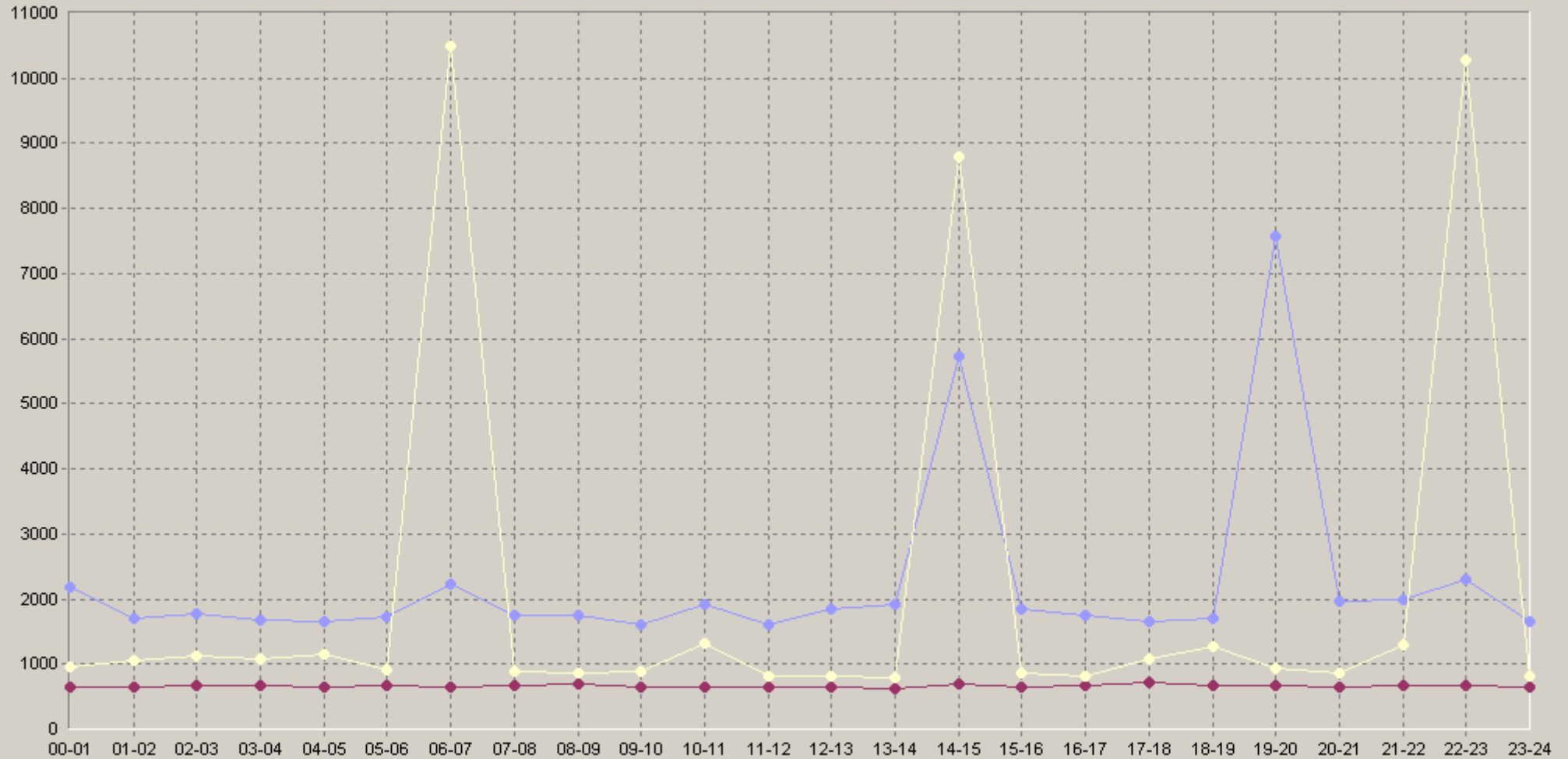
20. MSSQLServerTransactionSimulationTest.[alex] SQL Server Connect Time (usec)

		75<	90<			75<	90<
12:00-12:20	2 274 n/a	673 n/a	818 n/a	18:00-18:20	1 686 n/a	642 n/a	908 n/a
12:20-12:40	1 649 n/a	655 n/a	737 n/a	18:20-18:40	1 699 n/a	632 n/a	909 n/a
12:40-13:00	1 644 n/a	618 n/a	766 n/a	18:40-19:00	1 723 n/a	695 n/a	1 275 n/a
13:00-13:20	1 133 n/a	610 n/a	662 n/a	19:00-19:20	1 135 n/a	608 n/a	737 n/a
13:20-13:40	3 431 n/a	646 n/a	10 682 n/a	19:20-19:40	14 380 n/a	699 n/a	14 720 n/a
13:40-14:00	1 186 n/a	634 n/a	701 n/a	19:40-20:00	7 180 n/a	668 n/a	820 n/a
14:00-14:20	12 855 n/a	700 n/a	1 045 n/a	20:00-20:20	3 265 n/a	647 n/a	696 n/a
14:20-14:40	3 015 n/a	686 n/a	8 796 n/a	20:20-20:40	1 678 n/a	653 n/a	1 129 n/a
14:40-15:00	1 668 n/a	597 n/a	807 n/a	20:40-21:00	1 138 n/a	636 n/a	805 n/a
15:00-15:20	2 020 n/a	627 n/a	704 n/a	21:00-21:20	2 213 n/a	829 n/a	1 291 n/a
15:20-15:40	1 725 n/a	652 n/a	808 n/a	21:20-21:40	1 680 n/a	634 n/a	851 n/a
15:40-16:00	1 804 n/a	622 n/a	864 n/a	21:40-22:00	2 058 n/a	710 n/a	915 n/a
16:00-16:20	2 429 n/a	630 n/a	825 n/a	22:00-22:20	2 586 n/a	697 n/a	956 n/a
16:20-16:40	1 189 n/a	678 n/a	801 n/a	22:20-22:40	2 267 n/a	628 n/a	10 579 n/a
16:40-17:00	1 629 n/a	677 n/a	797 n/a	22:40-23:00	2 039 n/a	636 n/a	830 n/a
17:00-17:20	1 866 n/a	905 n/a	1 793 n/a	23:00-23:20	1 183 n/a	649 n/a	761 n/a
17:20-17:40	1 921 n/a	688 n/a	790 n/a	23:20-23:40	1 688 n/a	637 n/a	872 n/a
17:40-18:00	1 199 n/a	677 n/a	831 n/a	23:40-00:00	2 081 n/a	653 n/a	820 n/a

MS SQL Server 2000/2005/2008

21.07.2008 20:05 - 23.07.2008 11:17

60. MSSQLServerTransactionSimulationTest.[alex] SQL Server Connect Time (usec)

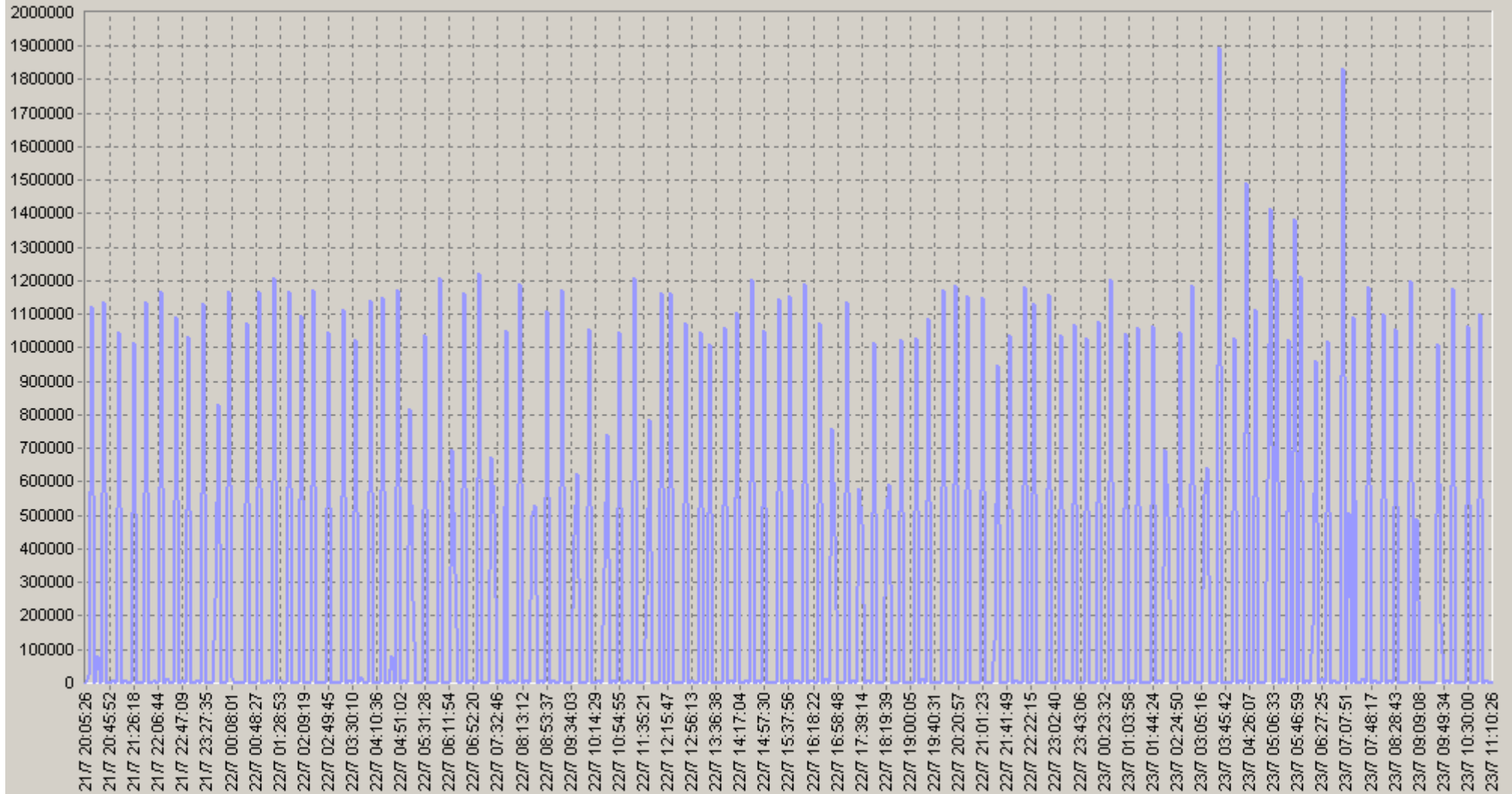


◆ [BaseLine Avg] MSSQLServerTransactionSimulationTest.[alex] SQL Server Connect Time (usec)(60)(SLA-ON-SERVER1)
 ◆ [BaseLine Percnt75 (<=)] MSSQLServerTransactionSimulationTest.[alex] SQL Server Connect Time (usec)(60)(SLA-ON-SERVER1)
 ◆ [BaseLine Percnt90 (<=)] MSSQLServerTransactionSimulationTest.[alex] SQL Server Connect Time (usec)(60)(SLA-ON-SERVER1)

MS SQL Server 2000/2005/2008

21.07.2008 20:05 - 23.07.2008 11:17

MSSQLServerTransactionSimulationTest.[vPro] SQL Server Connect Time (usec)



MSSQLServerTransactionSimulationTest.[vPro] SQL Server Connect Time (usec)(SLA-ON-SERVER1)

MS SQL Server 2000/2005/2008

21.07.2008 20:05 - 23.07.2008 11:17

20: MSSQLServerTransactionSimulationTest [vPro] SQL Server Connect Time (usec)

		75<	90<			75<	90<
00:00-00:20	281 925 n/a	177 n/a	369 n/a	06:00-06:20	270 599 n/a	178 n/a	286 n/a
00:20-00:40	285 977 n/a	179 n/a	492 n/a	06:20-06:40	273 635 n/a	185 n/a	8 879 n/a
00:40-01:00	276 665 n/a	175 n/a	366 n/a	06:40-07:00	231 533 n/a	174 n/a	363 n/a
01:00-01:20	2 137 n/a	172 n/a	177 n/a	07:00-07:20	216 637 n/a	178 n/a	298 n/a
01:20-01:40	285 427 n/a	178 n/a	381 n/a	07:20-07:40	286 025 n/a	173 n/a	370 n/a
01:40-02:00	279 478 n/a	180 n/a	363 n/a	07:40-08:00	281 010 n/a	179 n/a	384 n/a
02:00-02:20	287 293 n/a	182 n/a	345 n/a	08:00-08:20	286 582 n/a	409 n/a	486 n/a
02:20-02:40	278 573 n/a	176 n/a	9 137 n/a	08:20-08:40	269 029 n/a	177 n/a	303 n/a
02:40-03:00	278 170 n/a	167 n/a	287 n/a	08:40-09:00	289 815 n/a	175 n/a	413 n/a
03:00-03:20	291 399 n/a	173 n/a	366 n/a	09:00-09:20	214 050 n/a	181 n/a	377 n/a
03:20-03:40	376 449 n/a	175 n/a	408 n/a	09:20-09:40	1 624 n/a	172 n/a	279 n/a
03:40-04:00	145 640 n/a	174 n/a	334 n/a	09:40-10:00	283 410 n/a	177 n/a	372 n/a
04:00-04:20	130 240 n/a	170 n/a	201 n/a	10:00-10:20	279 922 n/a	160 n/a	395 n/a
04:20-04:40	479 168 n/a	200 n/a	341 n/a	10:20-10:40	268 943 n/a	173 n/a	304 n/a
04:40-05:00	400 267 n/a	182 n/a	352 n/a	10:40-11:00	270 326 n/a	176 n/a	626 n/a
05:00-05:20	283 722 n/a	170 n/a	231 n/a	11:00-11:20	163 230 n/a	469 n/a	530 n/a
05:20-05:40	260 016 n/a	178 n/a	380 n/a	11:20-11:40	303 106 n/a	403 n/a	521 n/a
05:40-06:00	475 208 n/a	175 n/a	1 599 n/a	11:40-12:00	263 585 n/a	153 n/a	333 n/a

MS SQL Server 2000/2005/2008

21.07.2008 20:05 - 23.07.2008 11:17

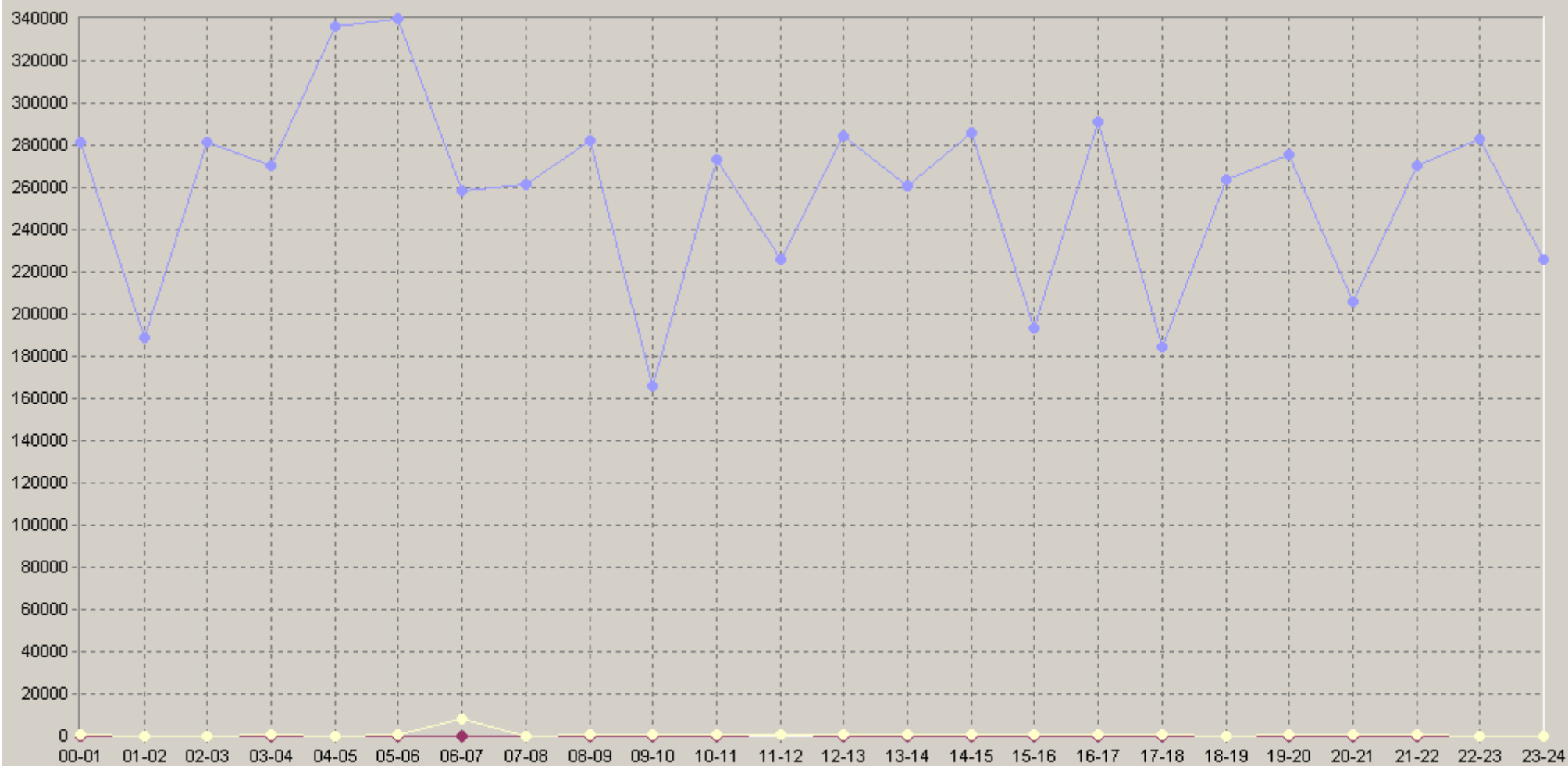
20: MSSQLServerTransactionSimulationTest [vPro] SQL Server Connect Time (usec)

		75<	90<			75<	90<
12:00-12:20	291 073 n/a	179 n/a	358 n/a	18:00-18:20	254 344 n/a	183 n/a	355 n/a
12:20-12:40	290 952 n/a	172 n/a	297 n/a	18:20-18:40	278 712 n/a	153 n/a	370 n/a
12:40-13:00	270 637 n/a	177 n/a	453 n/a	18:40-19:00	257 170 n/a	164 n/a	346 n/a
13:00-13:20	260 720 n/a	181 n/a	182 n/a	19:00-19:20	256 958 n/a	162 n/a	185 n/a
13:20-13:40	255 498 n/a	169 n/a	26 119 n/a	19:20-19:40	274 674 n/a	176 n/a	19 918 n/a
13:40-14:00	265 523 n/a	181 n/a	206 n/a	19:40-20:00	295 576 n/a	169 n/a	380 n/a
14:00-14:20	292 065 n/a	179 n/a	579 n/a	20:00-20:20	334 494 n/a	337 n/a	545 n/a
14:20-14:40	301 133 n/a	180 n/a	360 n/a	20:20-20:40	296 652 n/a	183 n/a	375 n/a
14:40-15:00	264 572 n/a	167 n/a	353 n/a	20:40-21:00	1 979 n/a	180 n/a	350 n/a
15:00-15:20	2 064 n/a	174 n/a	182 n/a	21:00-21:20	274 956 n/a	202 n/a	644 n/a
15:20-15:40	286 893 n/a	157 n/a	359 n/a	21:20-21:40	262 659 n/a	177 n/a	511 n/a
15:40-16:00	290 842 n/a	175 n/a	529 n/a	21:40-22:00	273 056 n/a	179 n/a	344 n/a
16:00-16:20	300 253 n/a	171 n/a	11 019 n/a	22:00-22:20	293 538 n/a	179 n/a	303 n/a
16:20-16:40	268 705 n/a	179 n/a	188 n/a	22:20-22:40	279 788 n/a	172 n/a	364 n/a
16:40-17:00	303 422 n/a	170 n/a	364 n/a	22:40-23:00	276 133 n/a	175 n/a	245 n/a
17:00-17:20	285 619 n/a	204 n/a	417 n/a	23:00-23:20	134 026 n/a	170 n/a	193 n/a
17:20-17:40	265 621 n/a	187 n/a	304 n/a	23:20-23:40	276 029 n/a	183 n/a	396 n/a
17:40-18:00	2 919 n/a	168 n/a	196 n/a	23:40-00:00	265 534 n/a	177 n/a	369 n/a

MS SQL Server 2000/2005/2008

21.07.2008 20:05 - 23.07.2008 11:17

60 MSSQLServerTransactionSimulationTest.[vPro] SQL Server Connect Time (usec)

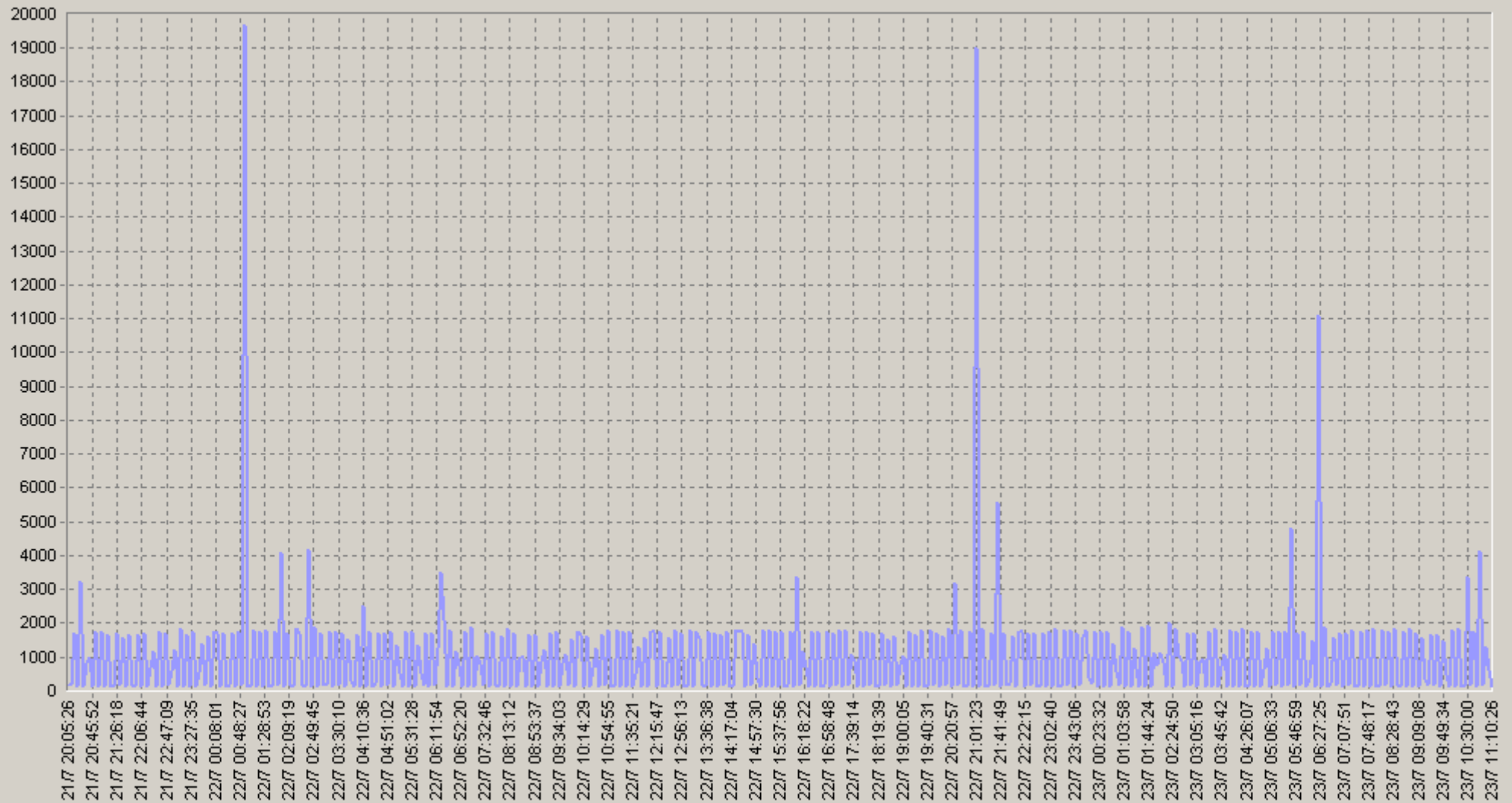


◆ [BaseLine Avg] MSSQLServerTransactionSimulationTest.[vPro] SQL Server Connect Time (usec)(60)(SLA-ON-SERVER1)
● [BaseLine Percnt75 (<)] MSSQLServerTransactionSimulationTest.[vPro] SQL Server Connect Time (usec)(60)(SLA-ON-SERVER1)
◆ [BaseLine Percnt90 (<)] MSSQLServerTransactionSimulationTest.[vPro] SQL Server Connect Time (usec)(60)(SLA-ON-SERVER1)

MS SQL Server 2000/2005/2008

21.07.2008 20:05 - 23.07.2008 11:17

MSSQLServerTransactionSimulationTest [sla-on-server1] SQL Server Connect Time (usec)



— MSSQLServerTransactionSimulationTest [sla-on-server1] SQL Server Connect Time (usec)(SLA-ON-SERVER1)

MS SQL Server 2000/2005/2008

21.07.2008 20:05 - 23.07.2008 11:17

20. MSSQLServerTransactionSimulationTest [sla-on-server1] SQL Server Connect Time (usec)

		75<	90<			75<	90<
00:00-00:20	957 n/a	147 n/a	389 n/a	06:00-06:20	943 n/a	151 n/a	331 n/a
00:20-00:40	933 n/a	157 n/a	346 n/a	06:20-06:40	2 540 n/a	163 n/a	8 407 n/a
00:40-01:00	3 207 n/a	193 n/a	545 n/a	06:40-07:00	726 n/a	136 n/a	325 n/a
01:00-01:20	538 n/a	135 n/a	222 n/a	07:00-07:20	757 n/a	137 n/a	355 n/a
01:20-01:40	975 n/a	157 n/a	331 n/a	07:20-07:40	944 n/a	154 n/a	397 n/a
01:40-02:00	1 261 n/a	171 n/a	361 n/a	07:40-08:00	946 n/a	160 n/a	442 n/a
02:00-02:20	757 n/a	167 n/a	285 n/a	08:00-08:20	565 n/a	148 n/a	202 n/a
02:20-02:40	1 501 n/a	181 n/a	7 994 n/a	08:20-08:40	979 n/a	134 n/a	365 n/a
02:40-03:00	540 n/a	128 n/a	197 n/a	08:40-09:00	938 n/a	157 n/a	366 n/a
03:00-03:20	930 n/a	151 n/a	297 n/a	09:00-09:20	958 n/a	155 n/a	388 n/a
03:20-03:40	973 n/a	159 n/a	313 n/a	09:20-09:40	534 n/a	153 n/a	234 n/a
03:40-04:00	714 n/a	133 n/a	278 n/a	09:40-10:00	919 n/a	161 n/a	357 n/a
04:00-04:20	837 n/a	141 n/a	294 n/a	10:00-10:20	943 n/a	142 n/a	505 n/a
04:20-04:40	965 n/a	164 n/a	458 n/a	10:20-10:40	935 n/a	136 n/a	278 n/a
04:40-05:00	945 n/a	152 n/a	372 n/a	10:40-11:00	1 243 n/a	148 n/a	432 n/a
05:00-05:20	541 n/a	140 n/a	177 n/a	11:00-11:20	804 n/a	161 n/a	336 n/a
05:20-05:40	944 n/a	140 n/a	351 n/a	11:20-11:40	936 n/a	139 n/a	312 n/a
05:40-06:00	1 316 n/a	147 n/a	420 n/a	11:40-12:00	881 n/a	142 n/a	280 n/a

MS SQL Server 2000/2005/2008

21.07.2008 20:05 - 23.07.2008 11:17

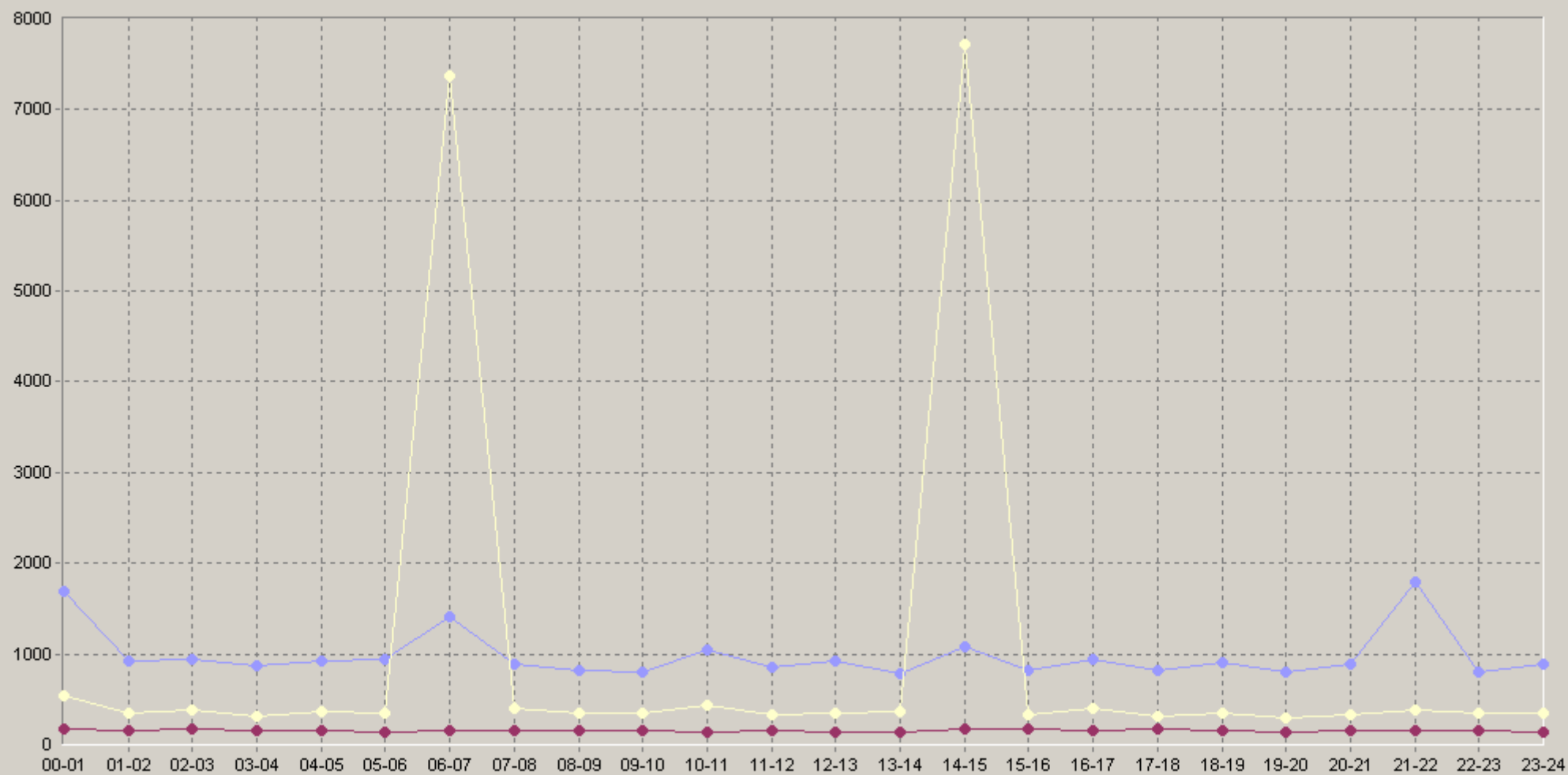
20. MSSQLServerTransactionSimulationTest [sla-on-server1] SQL Server Connect Time (usec)

		75<	90<			75<	90<
12:00-12:20	924 n/a	134 n/a	330 n/a	18:00-18:20	934 n/a	146 n/a	276 n/a
12:20-12:40	908 n/a	134 n/a	340 n/a	18:20-18:40	875 n/a	149 n/a	324 n/a
12:40-13:00	947 n/a	150 n/a	333 n/a	18:40-19:00	897 n/a	153 n/a	345 n/a
13:00-13:20	542 n/a	136 n/a	182 n/a	19:00-19:20	536 n/a	139 n/a	164 n/a
13:20-13:40	1 301 n/a	132 n/a	7 412 n/a	19:20-19:40	928 n/a	134 n/a	153 n/a
13:40-14:00	531 n/a	137 n/a	163 n/a	19:40-20:00	960 n/a	148 n/a	299 n/a
14:00-14:20	979 n/a	180 n/a	468 n/a	20:00-20:20	831 n/a	149 n/a	386 n/a
14:20-14:40	1 356 n/a	175 n/a	8 065 n/a	20:20-20:40	1 314 n/a	159 n/a	336 n/a
14:40-15:00	913 n/a	175 n/a	332 n/a	20:40-21:00	536 n/a	138 n/a	181 n/a
15:00-15:20	544 n/a	137 n/a	178 n/a	21:00-21:20	3 082 n/a	156 n/a	281 n/a
15:20-15:40	955 n/a	166 n/a	213 n/a	21:20-21:40	1 390 n/a	153 n/a	382 n/a
15:40-16:00	959 n/a	178 n/a	325 n/a	21:40-22:00	919 n/a	162 n/a	355 n/a
16:00-16:20	1 353 n/a	166 n/a	8 032 n/a	22:00-22:20	735 n/a	162 n/a	367 n/a
16:20-16:40	539 n/a	150 n/a	198 n/a	22:20-22:40	934 n/a	138 n/a	355 n/a
16:40-17:00	946 n/a	149 n/a	387 n/a	22:40-23:00	724 n/a	150 n/a	277 n/a
17:00-17:20	952 n/a	188 n/a	367 n/a	23:00-23:20	775 n/a	132 n/a	168 n/a
17:20-17:40	994 n/a	150 n/a	317 n/a	23:20-23:40	948 n/a	147 n/a	378 n/a
17:40-18:00	536 n/a	155 n/a	191 n/a	23:40-00:00	939 n/a	166 n/a	333 n/a

MS SQL Server 2000/2005/2008

21.07.2008 20:05 - 23.07.2008 11:17

60. MSSQLServerTransactionSimulationTest.[sla-on-server1] SQL Server Connect Time (usec)



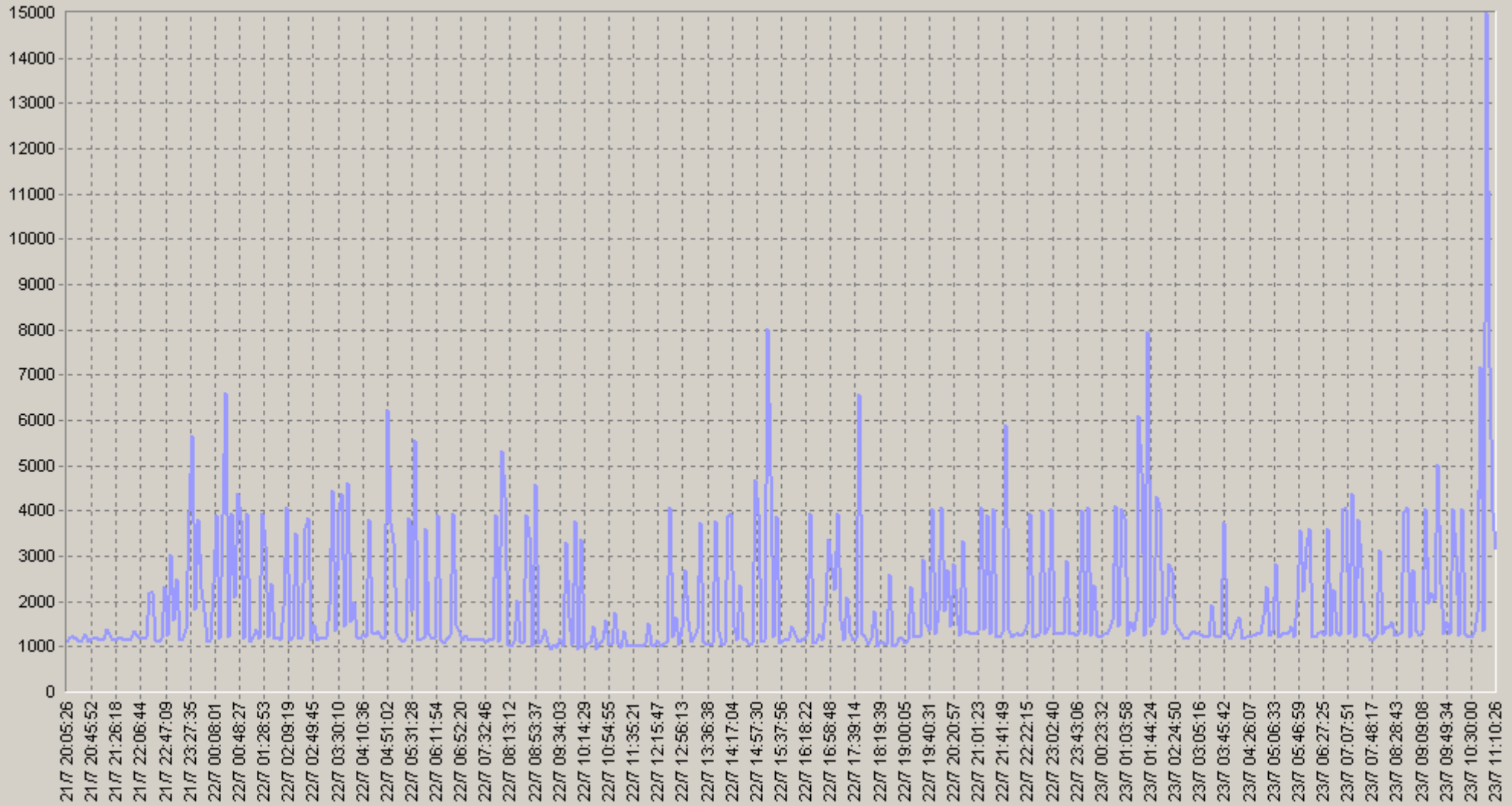
◆ [BaseLine Avg] MSSQLServerTransactionSimulationTest.[sla-on-server1] SQL Server Connect Time (usec)(60)(SLA-ON-SERVER1)
 ◆ [BaseLine Percnt75 (<=)] MSSQLServerTransactionSimulationTest.[sla-on-server1] SQL Server Connect Time (usec)(60)(SLA-ON-SERVER1)
 ◆ [BaseLine Percnt90 (<=)] MSSQLServerTransactionSimulationTest.[sla-on-server1] SQL Server Connect Time (usec)(60)(SLA-ON-SERVER1)



MS SQL Server 2000/2005/2008

21.07.2008 20:05 - 23.07.2008 11:17

MSSQLServerTransactionSimulationTest [alex] SQL Operation Time (usec)



MSSQLServerTransactionSimulationTest [alex] SQL Operation Time (usec)(SLA-ON-SERVER1)

MS SQL Server 2000/2005/2008

21.07.2008 20:05 - 23.07.2008 11:17

20. MSSQLServerTransactionSimulationTest [alex] SQL Operation Time (usec)

		75<	90<			75<	90<
00:00-00:20	1 834 n/a	1 352 n/a	1 618 n/a	06:00-06:20	2 098 n/a	1 295 n/a	1 433 n/a
00:20-00:40	2 605 n/a	1 314 n/a	2 128 n/a	06:20-06:40	1 520 n/a	1 294 n/a	1 396 n/a
00:40-01:00	3 148 n/a	1 341 n/a	13 982 n/a	06:40-07:00	1 988 n/a	1 329 n/a	3 452 n/a
01:00-01:20	1 641 n/a	1 349 n/a	1 468 n/a	07:00-07:20	2 064 n/a	1 290 n/a	1 442 n/a
01:20-01:40	3 777 n/a	1 431 n/a	14 640 n/a	07:20-07:40	1 704 n/a	1 275 n/a	1 428 n/a
01:40-02:00	1 812 n/a	1 300 n/a	2 449 n/a	07:40-08:00	1 870 n/a	1 249 n/a	1 453 n/a
02:00-02:20	2 595 n/a	1 379 n/a	4 536 n/a	08:00-08:20	2 064 n/a	1 408 n/a	1 821 n/a
02:20-02:40	1 671 n/a	1 408 n/a	1 538 n/a	08:20-08:40	1 284 n/a	1 265 n/a	1 409 n/a
02:40-03:00	1 588 n/a	1 268 n/a	1 333 n/a	08:40-09:00	3 110 n/a	1 309 n/a	12 960 n/a
03:00-03:20	1 347 n/a	1 282 n/a	1 363 n/a	09:00-09:20	1 583 n/a	1 330 n/a	1 413 n/a
03:20-03:40	2 493 n/a	1 357 n/a	3 228 n/a	09:20-09:40	1 917 n/a	1 354 n/a	4 000 n/a
03:40-04:00	2 101 n/a	1 306 n/a	1 500 n/a	09:40-10:00	1 686 n/a	1 298 n/a	1 399 n/a
04:00-04:20	1 319 n/a	1 290 n/a	1 498 n/a	10:00-10:20	2 685 n/a	1 383 n/a	9 886 n/a
04:20-04:40	1 581 n/a	1 318 n/a	1 448 n/a	10:20-10:40	1 196 n/a	1 247 n/a	1 302 n/a
04:40-05:00	2 375 n/a	1 423 n/a	2 593 n/a	10:40-11:00	4 500 n/a	1 379 n/a	3 746 n/a
05:00-05:20	1 688 n/a	1 279 n/a	1 527 n/a	11:00-11:20	1 982 n/a	1 260 n/a	1 492 n/a
05:20-05:40	2 211 n/a	1 307 n/a	1 448 n/a	11:20-11:40	1 098 n/a	1 054 n/a	1 137 n/a
05:40-06:00	2 012 n/a	1 303 n/a	1 584 n/a	11:40-12:00	1 028 n/a	1 030 n/a	1 171 n/a

MS SQL Server 2000/2005/2008

21.07.2008 20:05 - 23.07.2008 11:17

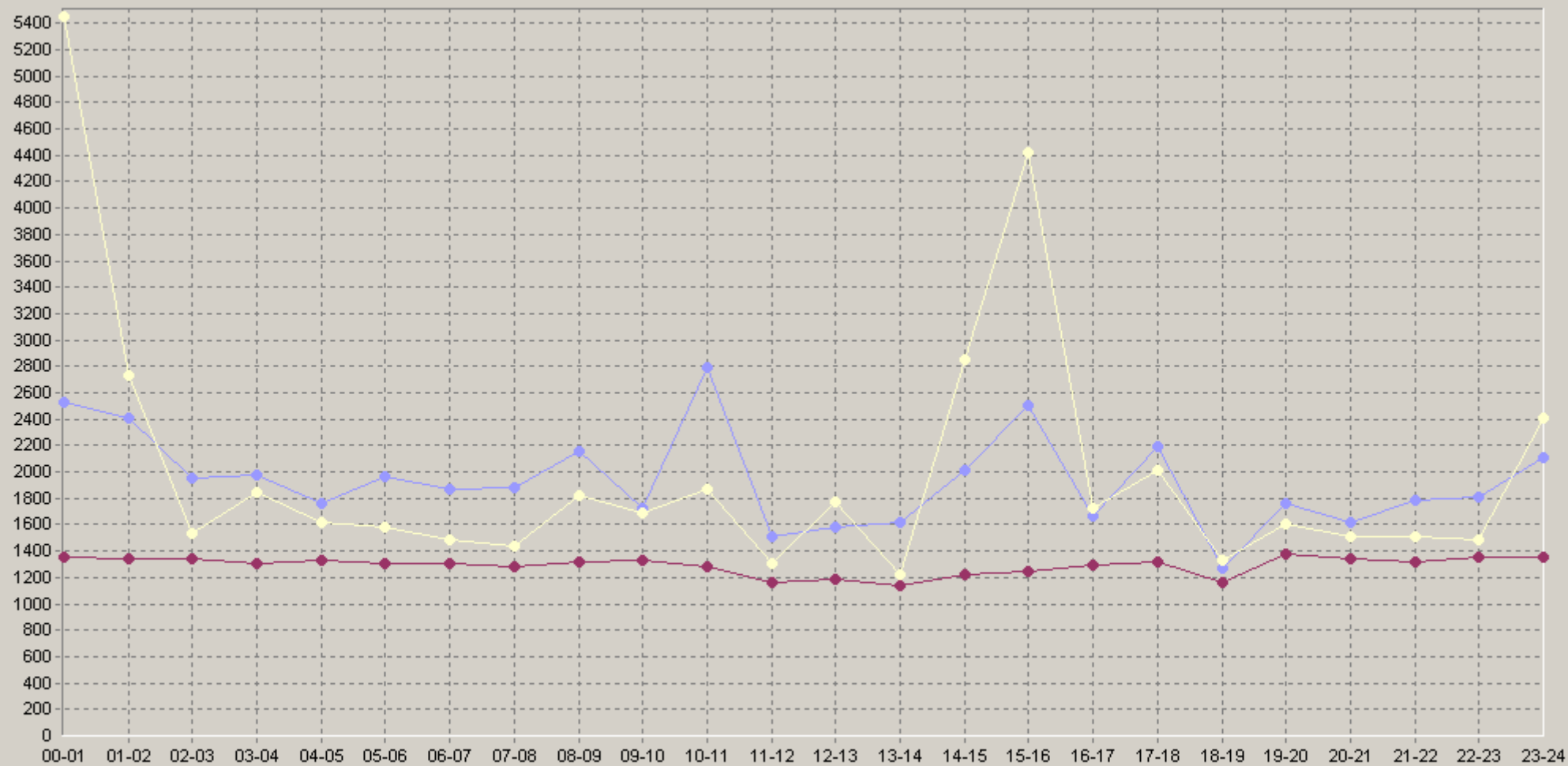
20. MSSQLServerTransactionSimulationTest [alex] SQL Operation Time (usec)

		75<	90<			75<	90<
12:00-12:20	1 182 n/a	1 142 n/a	1 211 n/a	18:00-18:20	1 271 n/a	1 142 n/a	1 333 n/a
12:20-12:40	1 843 n/a	1 150 n/a	1 776 n/a	18:20-18:40	1 452 n/a	1 177 n/a	1 211 n/a
12:40-13:00	1 714 n/a	1 190 n/a	2 307 n/a	18:40-19:00	1 104 n/a	1 161 n/a	1 328 n/a
13:00-13:20	1 304 n/a	1 188 n/a	1 486 n/a	19:00-19:20	1 449 n/a	1 223 n/a	1 371 n/a
13:20-13:40	1 744 n/a	1 119 n/a	1 168 n/a	19:20-19:40	1 735 n/a	1 307 n/a	1 941 n/a
13:40-14:00	1 817 n/a	1 099 n/a	1 178 n/a	19:40-20:00	2 117 n/a	1 392 n/a	1 478 n/a
14:00-14:20	2 543 n/a	1 059 n/a	2 489 n/a	20:00-20:20	1 939 n/a	1 399 n/a	1 554 n/a
14:20-14:40	1 540 n/a	1 252 n/a	2 854 n/a	20:20-20:40	1 713 n/a	1 308 n/a	1 656 n/a
14:40-15:00	1 992 n/a	1 176 n/a	1 295 n/a	20:40-21:00	1 242 n/a	1 301 n/a	1 405 n/a
15:00-15:20	3 708 n/a	1 262 n/a	14 856 n/a	21:00-21:20	1 957 n/a	1 436 n/a	1 560 n/a
15:20-15:40	2 565 n/a	1 184 n/a	4 416 n/a	21:20-21:40	1 554 n/a	1 250 n/a	1 316 n/a
15:40-16:00	1 224 n/a	1 218 n/a	1 324 n/a	21:40-22:00	1 831 n/a	1 306 n/a	1 494 n/a
16:00-16:20	1 199 n/a	1 236 n/a	1 645 n/a	22:00-22:20	1 290 n/a	1 296 n/a	1 428 n/a
16:20-16:40	1 847 n/a	1 273 n/a	1 310 n/a	22:20-22:40	1 767 n/a	1 321 n/a	1 399 n/a
16:40-17:00	1 943 n/a	1 332 n/a	2 568 n/a	22:40-23:00	2 364 n/a	1 403 n/a	3 945 n/a
17:00-17:20	2 608 n/a	1 271 n/a	3 406 n/a	23:00-23:20	1 404 n/a	1 309 n/a	1 415 n/a
17:20-17:40	1 418 n/a	1 318 n/a	1 340 n/a	23:20-23:40	2 710 n/a	1 438 n/a	7 731 n/a
17:40-18:00	2 536 n/a	1 376 n/a	2 014 n/a	23:40-00:00	2 190 n/a	1 342 n/a	1 696 n/a

MS SQL Server 2000/2005/2008

21.07.2008 20:05 - 23.07.2008 11:17

60. MSSQLServerTransactionSimulationTest.[alex] SQL Operation Time (usec)



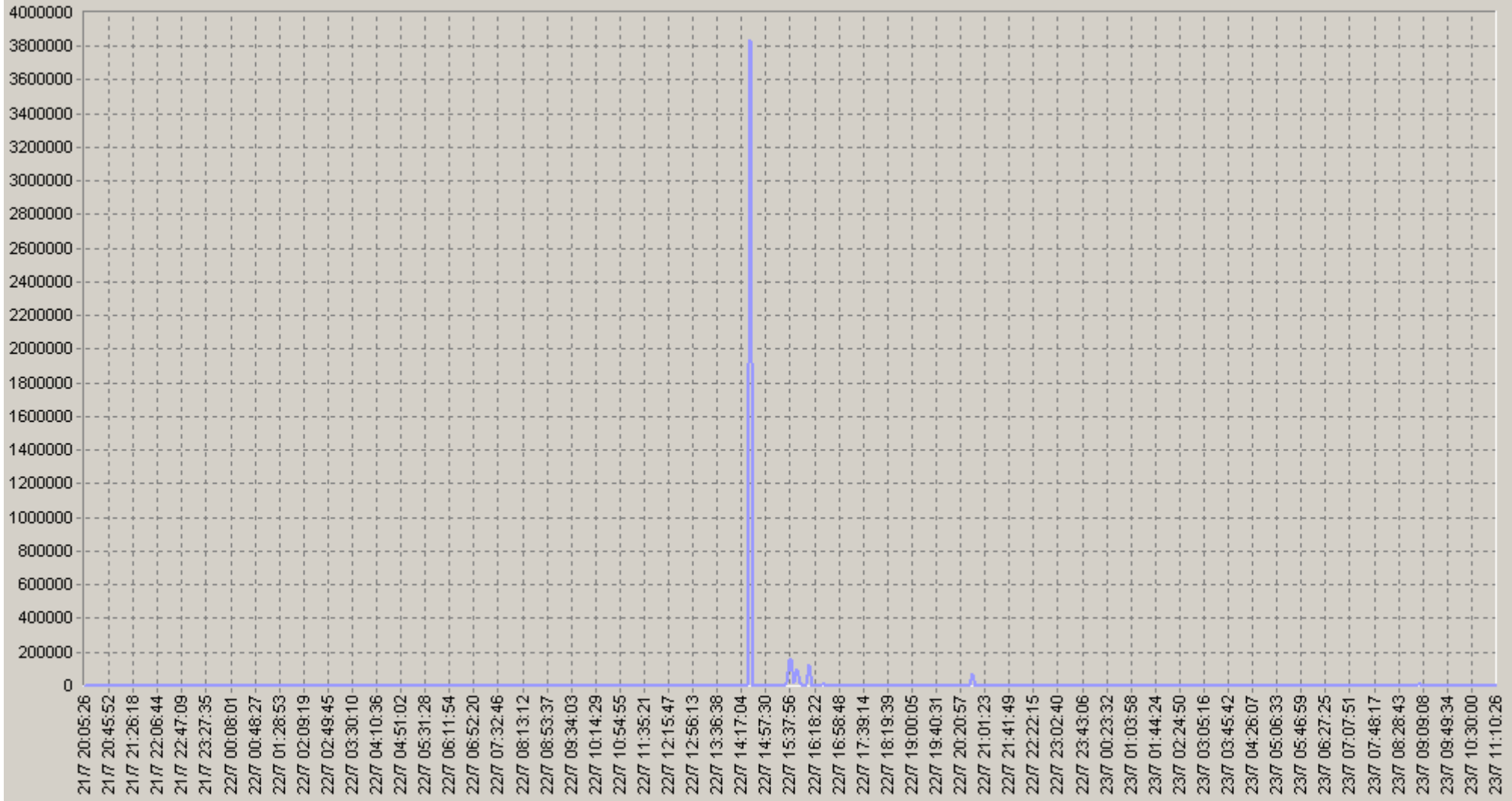
◆ [BaseLine Avg] MSSQLServerTransactionSimulationTest.[alex] SQL Operation Time (usec)(60)(SLA-ON-SERVER1)
 ● [BaseLine Percnt75 (<=)] MSSQLServerTransactionSimulationTest.[alex] SQL Operation Time (usec)(60)(SLA-ON-SERVER1)
 ● [BaseLine Percnt90 (<=)] MSSQLServerTransactionSimulationTest.[alex] SQL Operation Time (usec)(60)(SLA-ON-SERVER1)



MS SQL Server 2000/2005/2008

21.07.2008 20:05 - 23.07.2008 11:17

MSSQLServerTransactionSimulationTest [vPro] SQL Operation Time (usec)



MSSQLServerTransactionSimulationTest [vPro] SQL Operation Time (usec)(SLA-ON-SERVER1)

MS SQL Server 2000/2005/2008

21.07.2008 20:05 - 23.07.2008 11:17

20. MSSQLServerTransactionSimulationTest. [vPro] SQL Operation Time (usec)

		75<	90<			75<	90<
00:00-00:20	1 228 n/a	1 074 n/a	1 201 n/a	06:00-06:20	1 086 n/a	1 045 n/a	1 127 n/a
00:20-00:40	1 100 n/a	1 044 n/a	1 155 n/a	06:20-06:40	1 818 n/a	1 014 n/a	1 055 n/a
00:40-01:00	2 405 n/a	1 126 n/a	4 137 n/a	06:40-07:00	1 455 n/a	1 036 n/a	1 182 n/a
01:00-01:20	1 167 n/a	1 004 n/a	1 133 n/a	07:00-07:20	1 087 n/a	1 043 n/a	1 237 n/a
01:20-01:40	2 147 n/a	1 088 n/a	3 139 n/a	07:20-07:40	1 513 n/a	1 109 n/a	3 505 n/a
01:40-02:00	1 662 n/a	1 038 n/a	1 325 n/a	07:40-08:00	1 538 n/a	1 058 n/a	1 269 n/a
02:00-02:20	939 n/a	1 026 n/a	1 128 n/a	08:00-08:20	1 514 n/a	1 145 n/a	1 321 n/a
02:20-02:40	1 041 n/a	1 054 n/a	1 150 n/a	08:20-08:40	1 396 n/a	1 002 n/a	1 117 n/a
02:40-03:00	1 283 n/a	985 n/a	1 079 n/a	08:40-09:00	1 557 n/a	1 010 n/a	1 143 n/a
03:00-03:20	871 n/a	995 n/a	1 106 n/a	09:00-09:20	1 962 n/a	1 074 n/a	1 101 n/a
03:20-03:40	1 463 n/a	1 105 n/a	1 378 n/a	09:20-09:40	1 908 n/a	1 052 n/a	3 463 n/a
03:40-04:00	1 208 n/a	1 050 n/a	1 118 n/a	09:40-10:00	2 395 n/a	1 064 n/a	1 523 n/a
04:00-04:20	1 835 n/a	1 043 n/a	1 225 n/a	10:00-10:20	2 910 n/a	1 029 n/a	9 547 n/a
04:20-04:40	1 202 n/a	1 028 n/a	1 172 n/a	10:20-10:40	1 141 n/a	1 039 n/a	1 088 n/a
04:40-05:00	1 400 n/a	1 035 n/a	1 118 n/a	10:40-11:00	1 627 n/a	1 086 n/a	1 416 n/a
05:00-05:20	1 307 n/a	1 044 n/a	1 414 n/a	11:00-11:20	1 509 n/a	1 264 n/a	1 375 n/a
05:20-05:40	896 n/a	1 011 n/a	1 055 n/a	11:20-11:40	1 013 n/a	1 130 n/a	1 303 n/a
05:40-06:00	1 781 n/a	1 063 n/a	4 865 n/a	11:40-12:00	878 n/a	1 006 n/a	1 044 n/a

MS SQL Server 2000/2005/2008

21.07.2008 20:05 - 23.07.2008 11:17

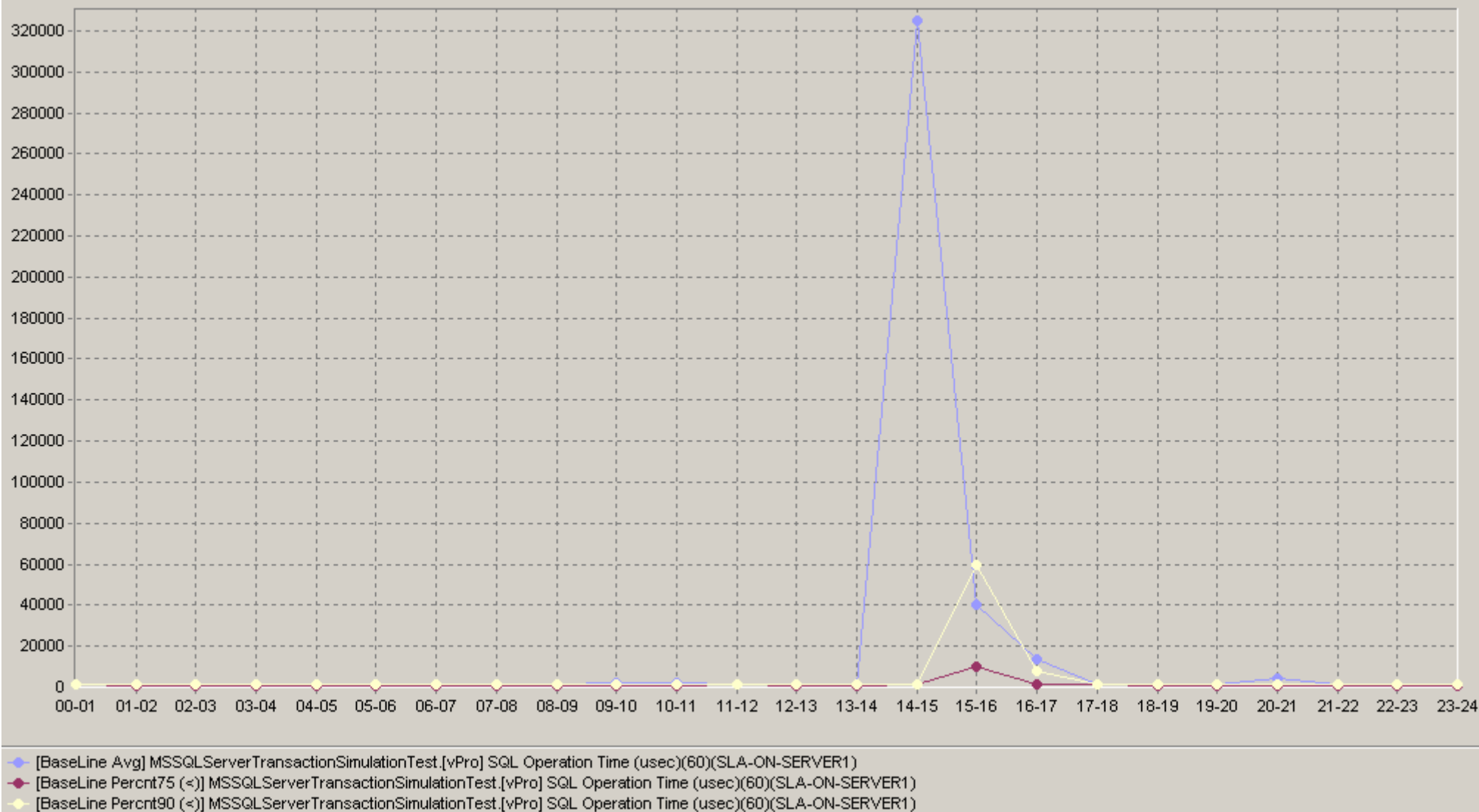
20. MSSQLServerTransactionSimulationTest. [vPro] SQL Operation Time (usec)

		75<	90<			75<	90<
12:00-12:20	919 n/a	1 024 n/a	1 080 n/a	18:00-18:20	1 065 n/a	1 037 n/a	1 680 n/a
12:20-12:40	950 n/a	1 007 n/a	1 043 n/a	18:20-18:40	1 016 n/a	970 n/a	1 138 n/a
12:40-13:00	1 004 n/a	1 032 n/a	1 105 n/a	18:40-19:00	1 164 n/a	1 009 n/a	1 126 n/a
13:00-13:20	1 232 n/a	1 038 n/a	1 101 n/a	19:00-19:20	1 576 n/a	1 170 n/a	3 165 n/a
13:20-13:40	869 n/a	970 n/a	1 042 n/a	19:20-19:40	1 056 n/a	1 111 n/a	1 304 n/a
13:40-14:00	962 n/a	1 046 n/a	1 106 n/a	19:40-20:00	1 650 n/a	950 n/a	961 n/a
14:00-14:20	953 n/a	1 034 n/a	1 054 n/a	20:00-20:20	1 281 n/a	1 110 n/a	1 215 n/a
14:20-14:40	956 822 n/a	1 189 n/a	1 344 n/a	20:20-20:40	949 n/a	985 n/a	1 171 n/a
14:40-15:00	1 661 n/a	1 198 n/a	1 537 n/a	20:40-21:00	10 078 n/a	1 053 n/a	1 739 n/a
15:00-15:20	1 623 n/a	1 203 n/a	1 924 n/a	21:00-21:20	1 256 n/a	1 050 n/a	1 157 n/a
15:20-15:40	54 520 n/a	1 513 n/a	129 254 n/a	21:20-21:40	1 292 n/a	1 036 n/a	1 089 n/a
15:40-16:00	65 118 n/a	27 333 n/a	80 220 n/a	21:40-22:00	1 107 n/a	1 072 n/a	1 157 n/a
16:00-16:20	34 569 n/a	1 221 n/a	2 357 n/a	22:00-22:20	1 457 n/a	1 041 n/a	1 129 n/a
16:20-16:40	4 921 n/a	1 234 n/a	12 530 n/a	22:20-22:40	981 n/a	1 017 n/a	1 120 n/a
16:40-17:00	2 468 n/a	1 590 n/a	6 076 n/a	22:40-23:00	1 526 n/a	1 046 n/a	1 551 n/a
17:00-17:20	1 591 n/a	1 015 n/a	1 164 n/a	23:00-23:20	1 080 n/a	1 042 n/a	1 055 n/a
17:20-17:40	1 166 n/a	1 074 n/a	1 589 n/a	23:20-23:40	1 466 n/a	1 072 n/a	1 929 n/a
17:40-18:00	1 503 n/a	1 140 n/a	1 360 n/a	23:40-00:00	1 174 n/a	1 047 n/a	1 378 n/a

MS SQL Server 2000/2005/2008

21.07.2008 20:05 - 23.07.2008 11:17

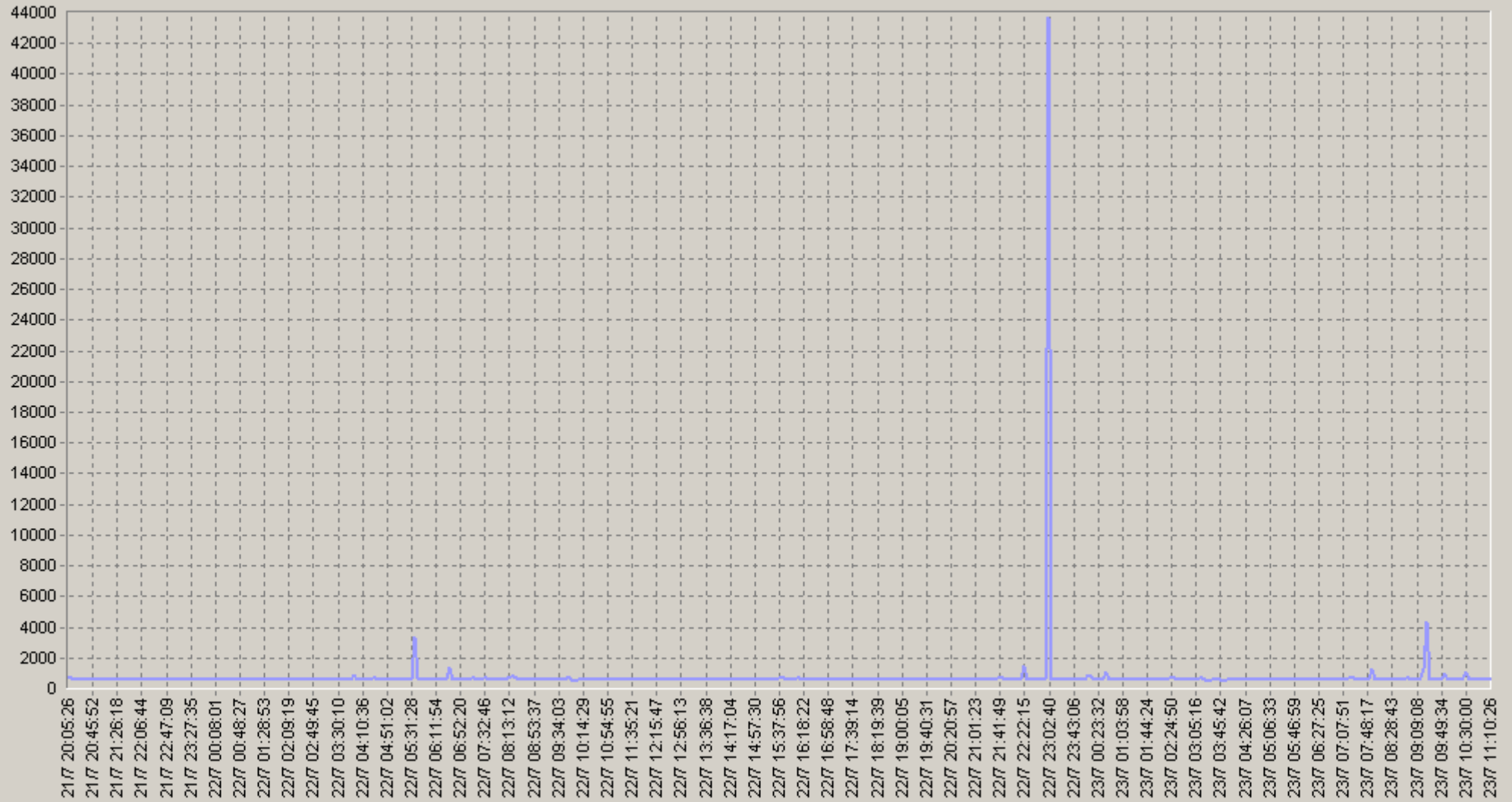
60 MSSQLServerTransactionSimulationTest.[vPro] SQL Operation Time (usec)



MS SQL Server 2000/2005/2008

21.07.2008 20:05 - 23.07.2008 11:17

MSSQLServerTransactionSimulationTest [sla-on-server1] SQL Operation Time (usec)



— MSSQLServerTransactionSimulationTest [sla-on-server1] SQL Operation Time (usec)(SLA-ON-SERVER1)

MS SQL Server 2000/2005/2008

21.07.2008 20:05 - 23.07.2008 11:17

20. MSSQLServerTransactionSimulationTest [sla-on-server1] SQL Operation Time (usec)

		75<	90<			75<	90<
00:00-00:20	661 n/a	627 n/a	650 n/a	06:00-06:20	598 n/a	625 n/a	665 n/a
00:20-00:40	679 n/a	628 n/a	687 n/a	06:20-06:40	720 n/a	638 n/a	663 n/a
00:40-01:00	634 n/a	651 n/a	695 n/a	06:40-07:00	617 n/a	640 n/a	661 n/a
01:00-01:20	617 n/a	642 n/a	669 n/a	07:00-07:20	632 n/a	645 n/a	693 n/a
01:20-01:40	618 n/a	637 n/a	662 n/a	07:20-07:40	626 n/a	639 n/a	701 n/a
01:40-02:00	627 n/a	647 n/a	709 n/a	07:40-08:00	703 n/a	635 n/a	740 n/a
02:00-02:20	623 n/a	638 n/a	697 n/a	08:00-08:20	666 n/a	673 n/a	711 n/a
02:20-02:40	651 n/a	656 n/a	715 n/a	08:20-08:40	626 n/a	641 n/a	683 n/a
02:40-03:00	625 n/a	643 n/a	681 n/a	08:40-09:00	633 n/a	643 n/a	698 n/a
03:00-03:20	647 n/a	670 n/a	713 n/a	09:00-09:20	612 n/a	624 n/a	672 n/a
03:20-03:40	596 n/a	617 n/a	662 n/a	09:20-09:40	1 141 n/a	649 n/a	3 679 n/a
03:40-04:00	636 n/a	633 n/a	681 n/a	09:40-10:00	683 n/a	633 n/a	649 n/a
04:00-04:20	623 n/a	646 n/a	733 n/a	10:00-10:20	604 n/a	636 n/a	671 n/a
04:20-04:40	649 n/a	643 n/a	739 n/a	10:20-10:40	666 n/a	640 n/a	713 n/a
04:40-05:00	638 n/a	641 n/a	706 n/a	10:40-11:00	606 n/a	635 n/a	653 n/a
05:00-05:20	605 n/a	621 n/a	651 n/a	11:00-11:20	625 n/a	644 n/a	667 n/a
05:20-05:40	973 n/a	657 n/a	714 n/a	11:20-11:40	627 n/a	644 n/a	697 n/a
05:40-06:00	633 n/a	652 n/a	701 n/a	11:40-12:00	623 n/a	654 n/a	670 n/a

MS SQL Server 2000/2005/2008

21.07.2008 20:05 - 23.07.2008 11:17

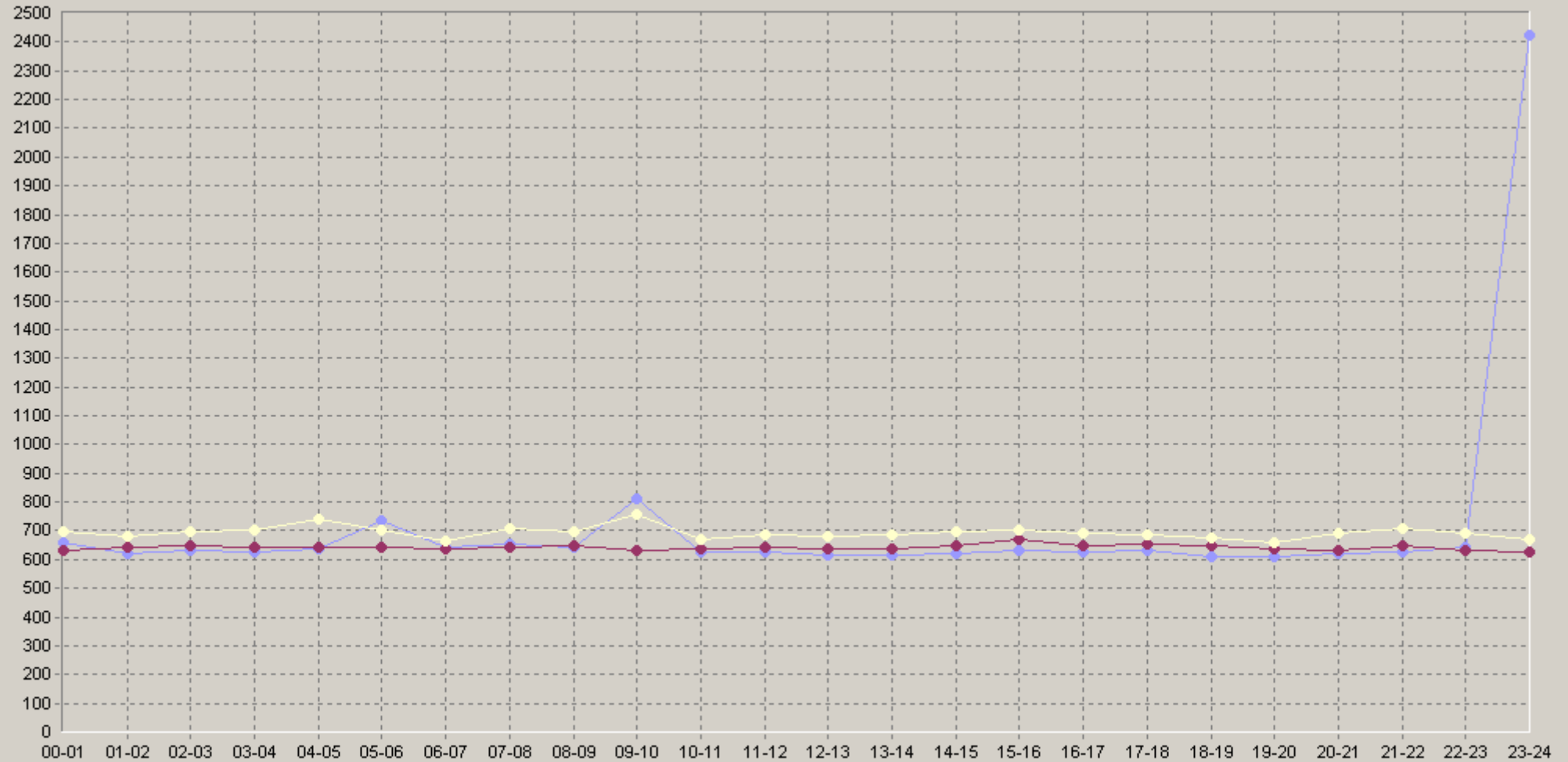
20. MSSQLServerTransactionSimulationTest [sla-on-server1] SQL Operation Time (usec)

		75<	90<			75<	90<
12:00-12:20	598 n/a	618 n/a	643 n/a	18:00-18:20	627 n/a	637 n/a	654 n/a
12:20-12:40	630 n/a	634 n/a	683 n/a	18:20-18:40	602 n/a	634 n/a	670 n/a
12:40-13:00	625 n/a	650 n/a	732 n/a	18:40-19:00	600 n/a	665 n/a	699 n/a
13:00-13:20	646 n/a	639 n/a	689 n/a	19:00-19:20	588 n/a	619 n/a	640 n/a
13:20-13:40	604 n/a	639 n/a	662 n/a	19:20-19:40	612 n/a	622 n/a	647 n/a
13:40-14:00	603 n/a	629 n/a	645 n/a	19:40-20:00	639 n/a	657 n/a	679 n/a
14:00-14:20	644 n/a	661 n/a	708 n/a	20:00-20:20	640 n/a	633 n/a	684 n/a
14:20-14:40	603 n/a	625 n/a	652 n/a	20:20-20:40	630 n/a	663 n/a	714 n/a
14:40-15:00	619 n/a	646 n/a	676 n/a	20:40-21:00	597 n/a	621 n/a	635 n/a
15:00-15:20	614 n/a	634 n/a	648 n/a	21:00-21:20	642 n/a	649 n/a	706 n/a
15:20-15:40	655 n/a	697 n/a	749 n/a	21:20-21:40	630 n/a	646 n/a	728 n/a
15:40-16:00	635 n/a	677 n/a	696 n/a	21:40-22:00	609 n/a	641 n/a	676 n/a
16:00-16:20	634 n/a	653 n/a	691 n/a	22:00-22:20	591 n/a	612 n/a	660 n/a
16:20-16:40	637 n/a	664 n/a	705 n/a	22:20-22:40	714 n/a	649 n/a	694 n/a
16:40-17:00	615 n/a	631 n/a	680 n/a	22:40-23:00	619 n/a	644 n/a	655 n/a
17:00-17:20	630 n/a	674 n/a	682 n/a	23:00-23:20	6150 n/a	627 n/a	712 n/a
17:20-17:40	636 n/a	653 n/a	693 n/a	23:20-23:40	613 n/a	631 n/a	668 n/a
17:40-18:00	630 n/a	649 n/a	672 n/a	23:40-00:00	604 n/a	616 n/a	650 n/a

MS SQL Server 2000/2005/2008

21.07.2008 20:05 - 23.07.2008 11:17

60. MSSQLServerTransactionSimulationTest.[sla-on-server1] SQL Operation Time (usec)

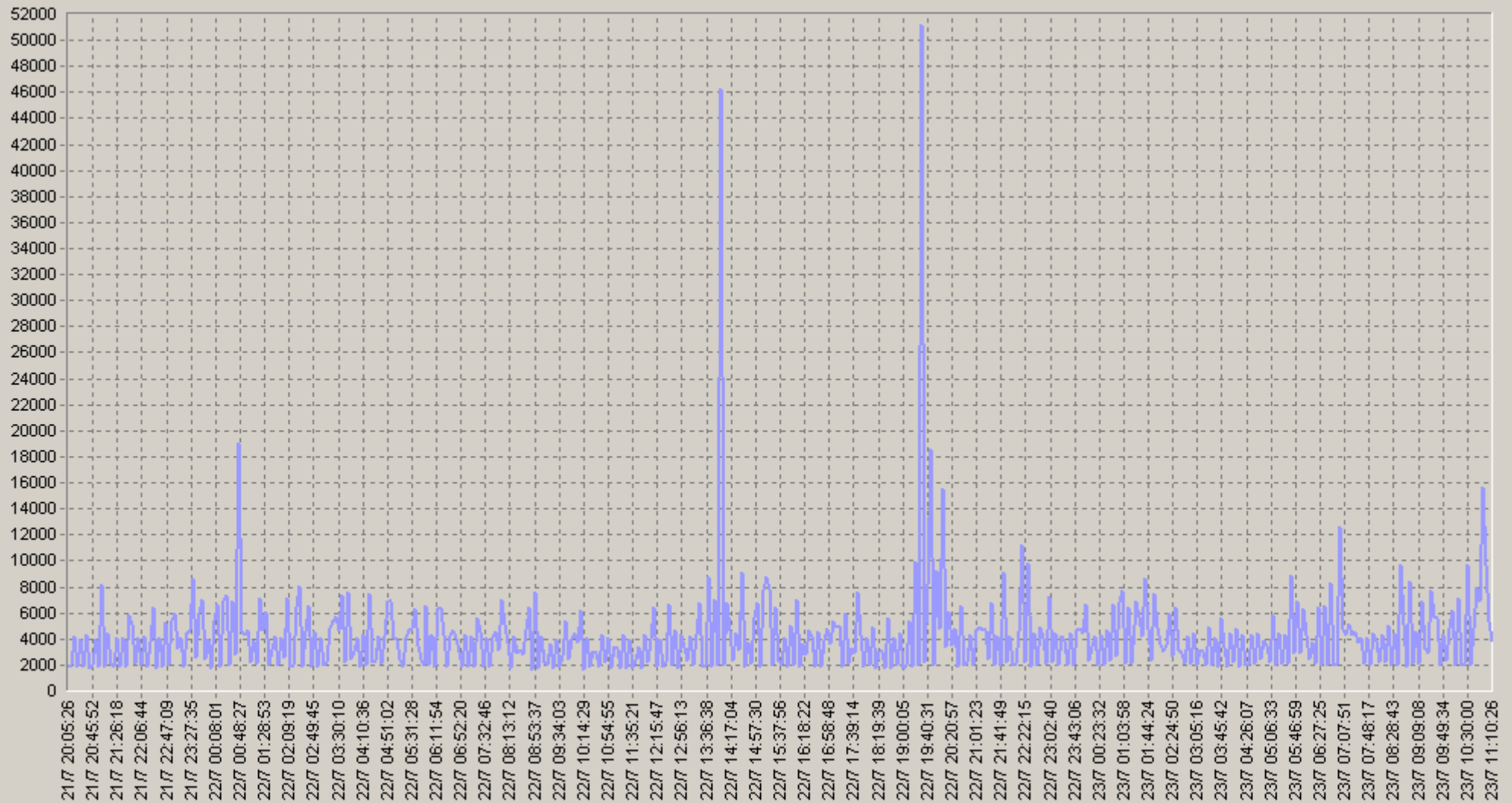


◆ [BaseLine Avg] MSSQLServerTransactionSimulationTest.[sla-on-server1] SQL Operation Time (usec)(60)(SLA-ON-SERVER1)
 ◆ [BaseLine Percnt75 (<)] MSSQLServerTransactionSimulationTest.[sla-on-server1] SQL Operation Time (usec)(60)(SLA-ON-SERVER1)
 ◆ [BaseLine Percnt90 (<)] MSSQLServerTransactionSimulationTest.[sla-on-server1] SQL Operation Time (usec)(60)(SLA-ON-SERVER1)

MS SQL Server 2000/2005/2008

21.07.2008 20:05 - 23.07.2008 11:17

MSSQLServerTransactionSimulationTest [alex] Total Transaction Time (usec)



— MSSQLServerTransactionSimulationTest.[alex] Total Transaction Time (usec)(SLA-ON-SERVER1)

MS SQL Server 2000/2005/2008

21.07.2008 20:05 - 23.07.2008 11:17

20. MSSQLServerTransactionSimulationTest [alex] Total Transaction Time (usec)

		75<	90<			75<	90<
00:00-00:20	3 675 n/a	2 503 n/a	11 774 n/a	06:00-06:20	3 999 n/a	2 157 n/a	12 426 n/a
00:20-00:40	4 500 n/a	2 954 n/a	13 021 n/a	06:20-06:40	4 168 n/a	2 231 n/a	11 847 n/a
00:40-01:00	6 845 n/a	4 559 n/a	15 794 n/a	06:40-07:00	4 752 n/a	2 158 n/a	4 740 n/a
01:00-01:20	3 213 n/a	2 225 n/a	2 888 n/a	07:00-07:20	3 641 n/a	2 246 n/a	12 235 n/a
01:20-01:40	6 014 n/a	4 498 n/a	15 683 n/a	07:20-07:40	4 113 n/a	2 763 n/a	12 241 n/a
01:40-02:00	3 737 n/a	2 886 n/a	12 027 n/a	07:40-08:00	3 727 n/a	2 230 n/a	11 959 n/a
02:00-02:20	4 252 n/a	2 787 n/a	13 815 n/a	08:00-08:20	3 696 n/a	2 408 n/a	11 576 n/a
02:20-02:40	4 586 n/a	2 834 n/a	12 643 n/a	08:20-08:40	2 935 n/a	2 250 n/a	3 067 n/a
02:40-03:00	2 895 n/a	2 065 n/a	3 018 n/a	08:40-09:00	5 689 n/a	2 728 n/a	16 147 n/a
03:00-03:20	3 267 n/a	2 234 n/a	5 506 n/a	09:00-09:20	3 507 n/a	2 513 n/a	11 395 n/a
03:20-03:40	4 562 n/a	3 115 n/a	12 504 n/a	09:20-09:40	3 564 n/a	2 251 n/a	6 769 n/a
03:40-04:00	3 764 n/a	2 196 n/a	5 843 n/a	09:40-10:00	3 564 n/a	2 473 n/a	11 733 n/a
04:00-04:20	2 907 n/a	2 135 n/a	3 090 n/a	10:00-10:20	4 524 n/a	2 646 n/a	13 189 n/a
04:20-04:40	3 583 n/a	2 679 n/a	3 073 n/a	10:20-10:40	3 478 n/a	2 079 n/a	3 218 n/a
04:40-05:00	4 306 n/a	2 794 n/a	12 737 n/a	10:40-11:00	6 692 n/a	2 867 n/a	13 004 n/a
05:00-05:20	3 053 n/a	2 144 n/a	3 176 n/a	11:00-11:20	3 701 n/a	2 220 n/a	12 217 n/a
05:20-05:40	4 075 n/a	2 735 n/a	11 950 n/a	11:20-11:40	2 903 n/a	1 929 n/a	3 179 n/a
05:40-06:00	4 514 n/a	2 370 n/a	12 051 n/a	11:40-12:00	2 949 n/a	1 943 n/a	2 847 n/a

MS SQL Server 2000/2005/2008

21.07.2008 20:05 - 23.07.2008 11:17

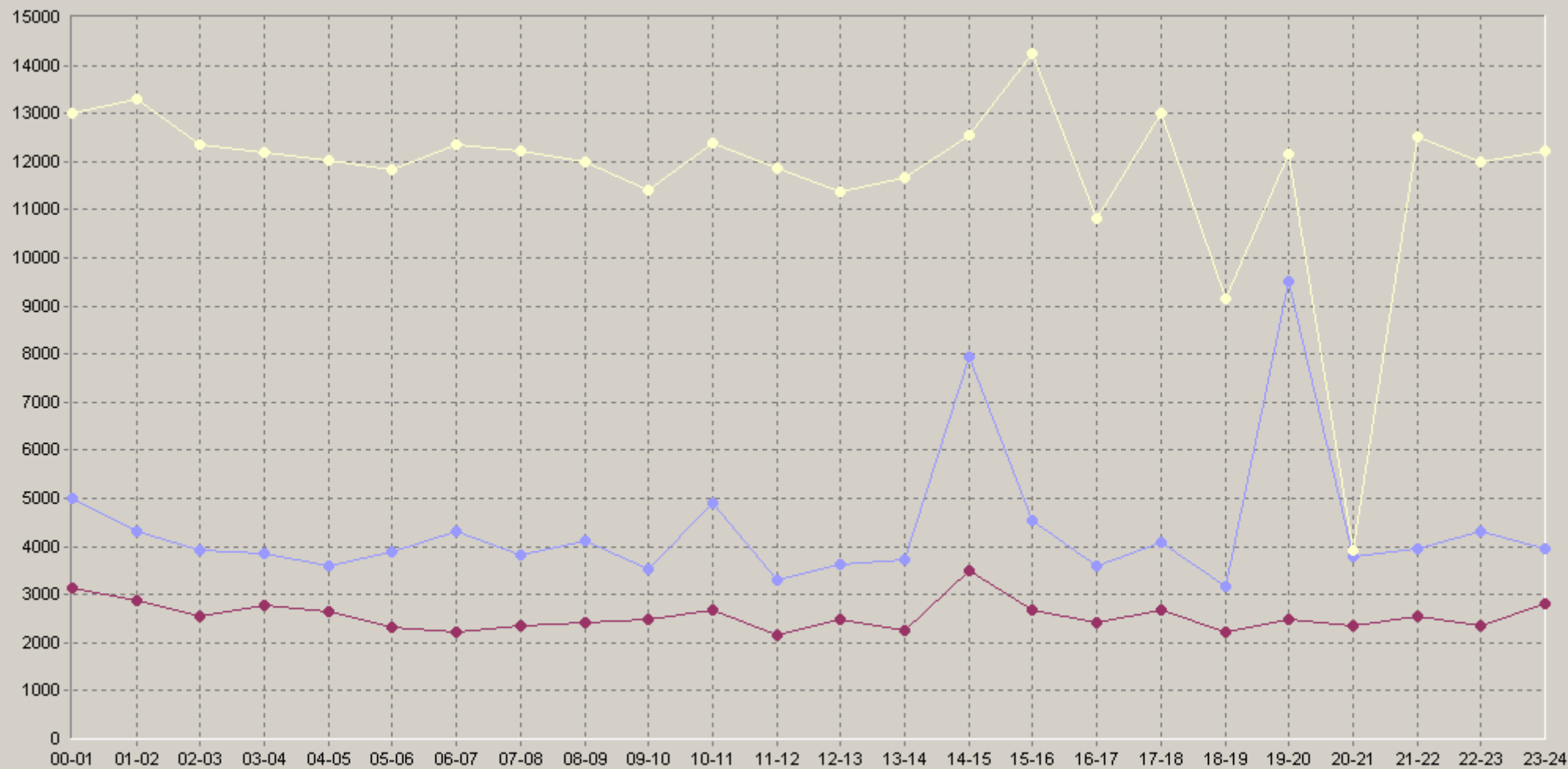
20. MSSQLServerTransactionSimulationTest [alex] Total Transaction Time (usec)

		75<	90<			75<	90<
12:00-12:20	3 619 n/a	2 028 n/a	4 361 n/a	18:00-18:20	3 124 n/a	2 133 n/a	5 440 n/a
12:20-12:40	3 698 n/a	2 483 n/a	12 087 n/a	18:20-18:40	3 338 n/a	2 216 n/a	9 155 n/a
12:40-13:00	3 566 n/a	2 829 n/a	10 581 n/a	18:40-19:00	3 038 n/a	2 368 n/a	3 231 n/a
13:00-13:20	2 657 n/a	2 243 n/a	3 341 n/a	19:00-19:20	2 789 n/a	2 093 n/a	2 799 n/a
13:20-13:40	5 330 n/a	1 993 n/a	13 301 n/a	19:20-19:40	16 273 n/a	2 718 n/a	15 912 n/a
13:40-14:00	3 207 n/a	2 032 n/a	3 352 n/a	19:40-20:00	9 498 n/a	2 285 n/a	15 638 n/a
14:00-14:20	15 559 n/a	2 129 n/a	15 343 n/a	20:00-20:20	5 406 n/a	2 367 n/a	8 656 n/a
14:20-14:40	4 756 n/a	3 585 n/a	10 155 n/a	20:20-20:40	3 574 n/a	2 427 n/a	9 801 n/a
14:40-15:00	3 865 n/a	2 629 n/a	12 536 n/a	20:40-21:00	2 588 n/a	2 295 n/a	2 794 n/a
15:00-15:20	5 895 n/a	2 755 n/a	15 800 n/a	21:00-21:20	4 359 n/a	2 482 n/a	12 810 n/a
15:20-15:40	4 497 n/a	2 778 n/a	13 281 n/a	21:20-21:40	3 433 n/a	2 305 n/a	12 022 n/a
15:40-16:00	3 241 n/a	2 100 n/a	2 785 n/a	21:40-22:00	4 094 n/a	2 579 n/a	12 156 n/a
16:00-16:20	3 824 n/a	2 421 n/a	2 929 n/a	22:00-22:20	4 039 n/a	2 229 n/a	3 995 n/a
16:20-16:40	3 212 n/a	2 092 n/a	2 773 n/a	22:20-22:40	4 240 n/a	2 232 n/a	11 871 n/a
16:40-17:00	3 776 n/a	2 820 n/a	10 819 n/a	22:40-23:00	4 628 n/a	2 659 n/a	12 438 n/a
17:00-17:20	4 683 n/a	3 390 n/a	13 187 n/a	23:00-23:20	2 770 n/a	2 142 n/a	3 202 n/a
17:20-17:40	3 571 n/a	2 185 n/a	2 985 n/a	23:20-23:40	4 594 n/a	3 182 n/a	12 779 n/a
17:40-18:00	3 963 n/a	2 671 n/a	12 720 n/a	23:40-00:00	4 482 n/a	2 805 n/a	12 792 n/a

MS SQL Server 2000/2005/2008

21.07.2008 20:05 - 23.07.2008 11:17

60. MSSQLServerTransactionSimulationTest.[alex] Total Transaction Time (usec)

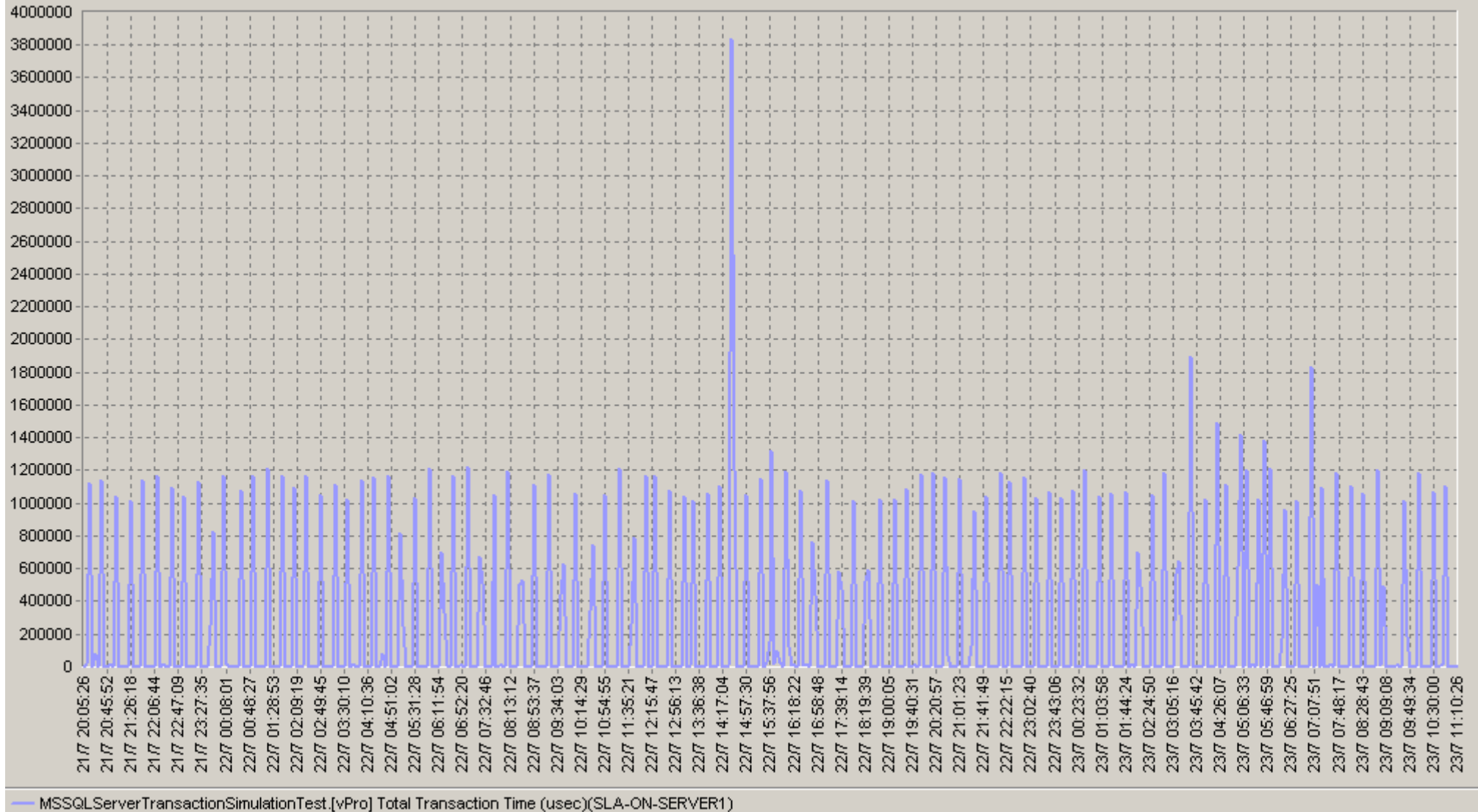


◆ [BaseLine Avg] MSSQLServerTransactionSimulationTest.[alex] Total Transaction Time (usec)(60)(SLA-ON-SERVER1)
 ● [BaseLine Percnt75 (<=)] MSSQLServerTransactionSimulationTest.[alex] Total Transaction Time (usec)(60)(SLA-ON-SERVER1)
 ● [BaseLine Percnt90 (<=)] MSSQLServerTransactionSimulationTest.[alex] Total Transaction Time (usec)(60)(SLA-ON-SERVER1)

MS SQL Server 2000/2005/2008

21.07.2008 20:05 - 23.07.2008 11:17

MSSQLServerTransactionSimulationTest.[vPro] Total Transaction Time (usec)



MS SQL Server 2000/2005/2008

21.07.2008 20:05 - 23.07.2008 11:17

20. MSSQLServerTransactionSimulationTest. [vPro] Total Transaction Time (usec)

		75<	90<			75<	90<
00:00-00:20	283 273 n/a	1 473 n/a	10 855 n/a	06:00-06:20	271 851 n/a	1 298 n/a	5 494 n/a
00:20-00:40	287 248 n/a	1 570 n/a	6 532 n/a	06:20-06:40	275 581 n/a	1 398 n/a	9 987 n/a
00:40-01:00	279 228 n/a	4 251 n/a	15 512 n/a	06:40-07:00	233 137 n/a	1 435 n/a	9 256 n/a
01:00-01:20	3 452 n/a	1 294 n/a	2 128 n/a	07:00-07:20	217 828 n/a	1 347 n/a	1 851 n/a
01:20-01:40	287 696 n/a	1 652 n/a	15 346 n/a	07:20-07:40	287 726 n/a	2 190 n/a	8 999 n/a
01:40-02:00	281 300 n/a	1 576 n/a	15 035 n/a	07:40-08:00	282 701 n/a	1 410 n/a	13 412 n/a
02:00-02:20	288 386 n/a	1 307 n/a	2 332 n/a	08:00-08:20	288 222 n/a	1 830 n/a	8 145 n/a
02:20-02:40	279 763 n/a	1 492 n/a	10 194 n/a	08:20-08:40	270 570 n/a	1 357 n/a	7 300 n/a
02:40-03:00	279 569 n/a	1 245 n/a	1 552 n/a	08:40-09:00	291 557 n/a	1 637 n/a	14 888 n/a
03:00-03:20	292 395 n/a	1 282 n/a	1 713 n/a	09:00-09:20	216 182 n/a	1 520 n/a	9 799 n/a
03:20-03:40	378 086 n/a	1 712 n/a	8 554 n/a	09:20-09:40	3 673 n/a	1 350 n/a	8 059 n/a
03:40-04:00	146 988 n/a	1 312 n/a	2 332 n/a	09:40-10:00	285 968 n/a	1 789 n/a	27 215 n/a
04:00-04:20	132 177 n/a	1 301 n/a	11 900 n/a	10:00-10:20	282 966 n/a	1 912 n/a	15 567 n/a
04:20-04:40	480 523 n/a	1 531 n/a	9 051 n/a	10:20-10:40	270 263 n/a	1 322 n/a	2 429 n/a
04:40-05:00	401 794 n/a	1 486 n/a	12 273 n/a	10:40-11:00	272 081 n/a	1 652 n/a	14 539 n/a
05:00-05:20	285 172 n/a	1 334 n/a	2 665 n/a	11:00-11:20	164 918 n/a	1 881 n/a	4 219 n/a
05:20-05:40	261 040 n/a	1 315 n/a	2 222 n/a	11:20-11:40	304 221 n/a	1 704 n/a	1 922 n/a
05:40-06:00	477 096 n/a	2 398 n/a	8 198 n/a	11:40-12:00	264 586 n/a	1 265 n/a	1 636 n/a

MS SQL Server 2000/2005/2008

21.07.2008 20:05 - 23.07.2008 11:17

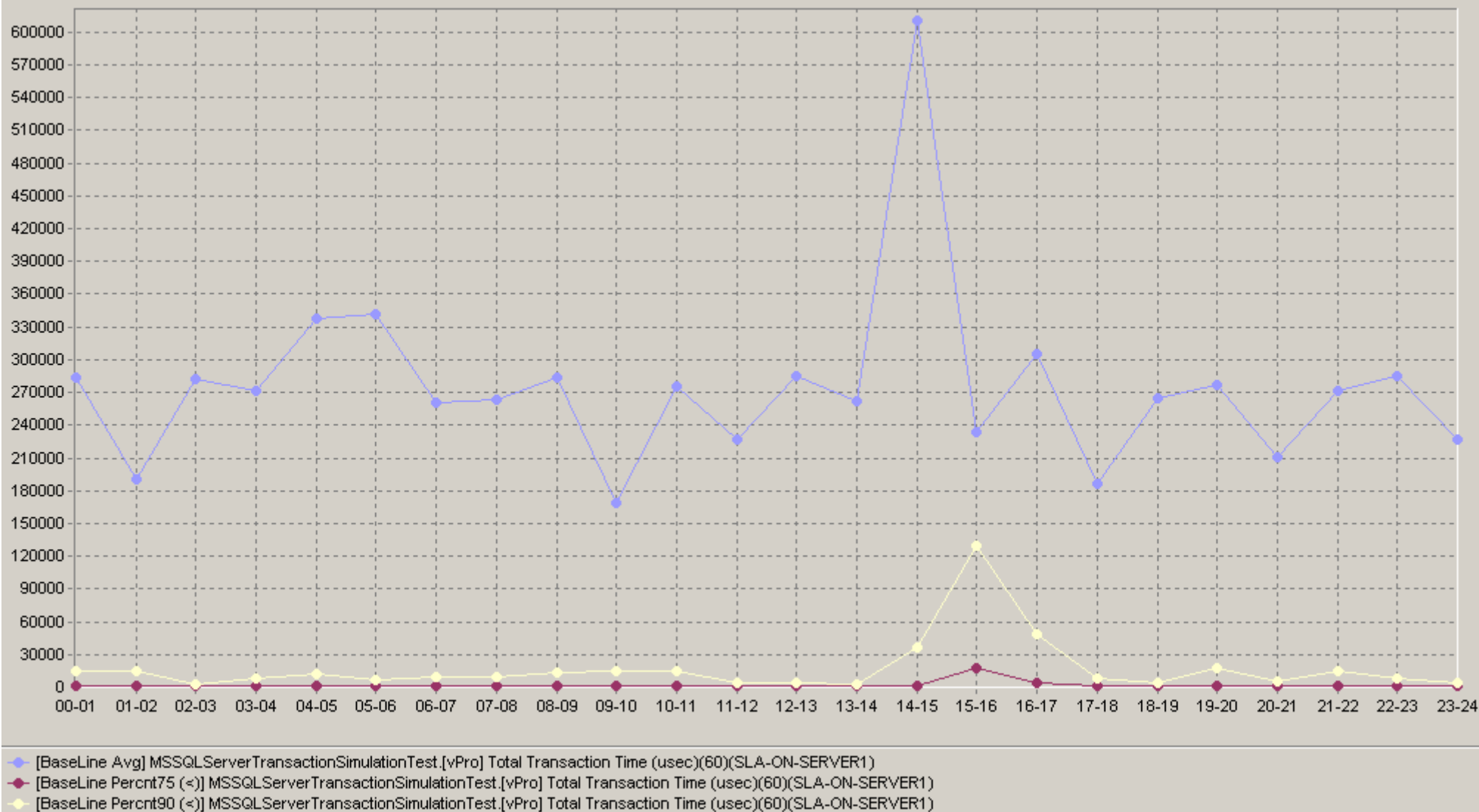
20. MSSQLServerTransactionSimulationTest. [vPro] Total Transaction Time (usec)

		75<	90<			75<	90<
12:00-12:20	292 094 n/a	1 338 n/a	1 702 n/a	18:00-18:20	255 513 n/a	1 563 n/a	2 880 n/a
12:20-12:40	292 027 n/a	1 336 n/a	2 421 n/a	18:20-18:40	279 896 n/a	1 440 n/a	3 585 n/a
12:40-13:00	271 814 n/a	1 370 n/a	3 957 n/a	18:40-19:00	258 501 n/a	1 358 n/a	1 784 n/a
13:00-13:20	262 110 n/a	1 346 n/a	1 957 n/a	19:00-19:20	258 652 n/a	1 769 n/a	5 807 n/a
13:20-13:40	256 497 n/a	1 258 n/a	27 152 n/a	19:20-19:40	275 840 n/a	1 539 n/a	21 387 n/a
13:40-14:00	266 670 n/a	1 334 n/a	2 093 n/a	19:40-20:00	297 356 n/a	1 263 n/a	17 848 n/a
14:00-14:20	293 130 n/a	1 304 n/a	1 989 n/a	20:00-20:20	335 913 n/a	1 766 n/a	6 843 n/a
14:20-14:40	1 258 114 n/a	1 836 n/a	42 133 n/a	20:20-20:40	298 134 n/a	1 282 n/a	4 727 n/a
14:40-15:00	266 428 n/a	1 879 n/a	11 443 n/a	20:40-21:00	12 218 n/a	1 547 n/a	2 743 n/a
15:00-15:20	3 870 n/a	2 168 n/a	2 356 n/a	21:00-21:20	276 358 n/a	1 458 n/a	9 249 n/a
15:20-15:40	341 555 n/a	11 575 n/a	194 994 n/a	21:20-21:40	264 109 n/a	1 423 n/a	15 135 n/a
15:40-16:00	356 174 n/a	53 314 n/a	412 232 n/a	21:40-22:00	274 327 n/a	1 645 n/a	4 043 n/a
16:00-16:20	334 983 n/a	1 926 n/a	72 675 n/a	22:00-22:20	295 133 n/a	1 436 n/a	7 846 n/a
16:20-16:40	273 766 n/a	1 573 n/a	31 906 n/a	22:20-22:40	280 944 n/a	1 500 n/a	2 387 n/a
16:40-17:00	306 041 n/a	3 780 n/a	14 111 n/a	22:40-23:00	277 832 n/a	1 407 n/a	6 093 n/a
17:00-17:20	287 386 n/a	1 468 n/a	15 619 n/a	23:00-23:20	135 233 n/a	1 291 n/a	2 028 n/a
17:20-17:40	266 974 n/a	1 858 n/a	3 124 n/a	23:20-23:40	277 636 n/a	1 997 n/a	15 209 n/a
17:40-18:00	4 587 n/a	1 639 n/a	3 348 n/a	23:40-00:00	266 855 n/a	1 627 n/a	4 386 n/a

MS SQL Server 2000/2005/2008

21.07.2008 20:05 - 23.07.2008 11:17

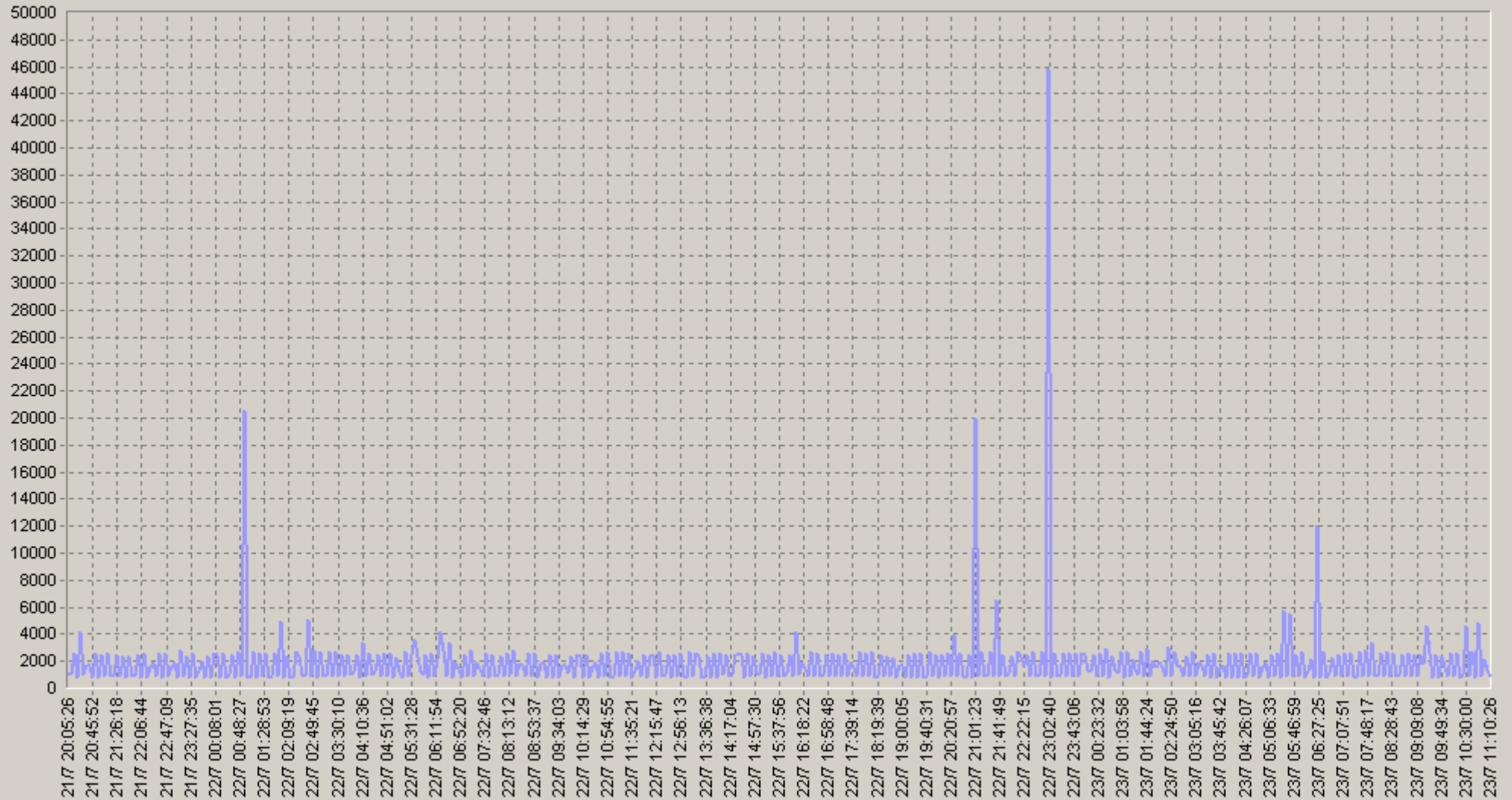
60. MSSQLServerTransactionSimulationTest.[vPro] Total Transaction Time (usec)



MS SQL Server 2000/2005/2008

21.07.2008 20:05 - 23.07.2008 11:17

MSSQLServerTransactionSimulationTest.[sla-on-server1] Total Transaction Time (usec)



— MSSQLServerTransactionSimulationTest.[sla-on-server1] Total Transaction Time (usec)(SLA-ON-SERVER1)

MS SQL Server 2000/2005/2008

21.07.2008 20:05 - 23.07.2008 11:17

20. MSSQLServerTransactionSimulationTest [sla-on-server1] Total Transaction Time (usec)

		75<	90<			75<	90<
00:00-00:20	1 753 n/a	893 n/a	2 739 n/a	06:00-06:20	1 723 n/a	993 n/a	2 292 n/a
00:20-00:40	1 760 n/a	1 031 n/a	3 350 n/a	06:20-06:40	3 391 n/a	1 047 n/a	9 191 n/a
00:40-01:00	4 029 n/a	1 204 n/a	1 997 n/a	06:40-07:00	1 476 n/a	906 n/a	1 277 n/a
01:00-01:20	1 307 n/a	940 n/a	1 389 n/a	07:00-07:20	1 526 n/a	993 n/a	1 601 n/a
01:20-01:40	1 749 n/a	947 n/a	2 010 n/a	07:20-07:40	1 735 n/a	974 n/a	2 157 n/a
01:40-02:00	2 067 n/a	1 046 n/a	1 956 n/a	07:40-08:00	1 825 n/a	1 028 n/a	4 994 n/a
02:00-02:20	1 515 n/a	976 n/a	1 695 n/a	08:00-08:20	1 366 n/a	1 036 n/a	1 239 n/a
02:20-02:40	2 286 n/a	1 058 n/a	8 756 n/a	08:20-08:40	1 756 n/a	997 n/a	2 043 n/a
02:40-03:00	1 293 n/a	959 n/a	1 211 n/a	08:40-09:00	1 734 n/a	1 054 n/a	1 961 n/a
03:00-03:20	1 792 n/a	1 031 n/a	2 717 n/a	09:00-09:20	1 701 n/a	969 n/a	1 865 n/a
03:20-03:40	1 722 n/a	958 n/a	1 828 n/a	09:20-09:40	1 814 n/a	1 195 n/a	5 524 n/a
03:40-04:00	1 513 n/a	990 n/a	1 781 n/a	09:40-10:00	1 780 n/a	1 468 n/a	2 887 n/a
04:00-04:20	1 586 n/a	997 n/a	1 167 n/a	10:00-10:20	1 666 n/a	957 n/a	1 394 n/a
04:20-04:40	1 762 n/a	1 176 n/a	1 834 n/a	10:20-10:40	1 761 n/a	984 n/a	1 733 n/a
04:40-05:00	1 749 n/a	1 065 n/a	1 819 n/a	10:40-11:00	2 003 n/a	923 n/a	1 852 n/a
05:00-05:20	1 272 n/a	868 n/a	1 049 n/a	11:00-11:20	1 609 n/a	979 n/a	1 836 n/a
05:20-05:40	2 440 n/a	1 019 n/a	8 973 n/a	11:20-11:40	1 759 n/a	974 n/a	1 868 n/a
05:40-06:00	2 099 n/a	1 001 n/a	1 921 n/a	11:40-12:00	1 649 n/a	955 n/a	1 814 n/a

MS SQL Server 2000/2005/2008

21.07.2008 20:05 - 23.07.2008 11:17

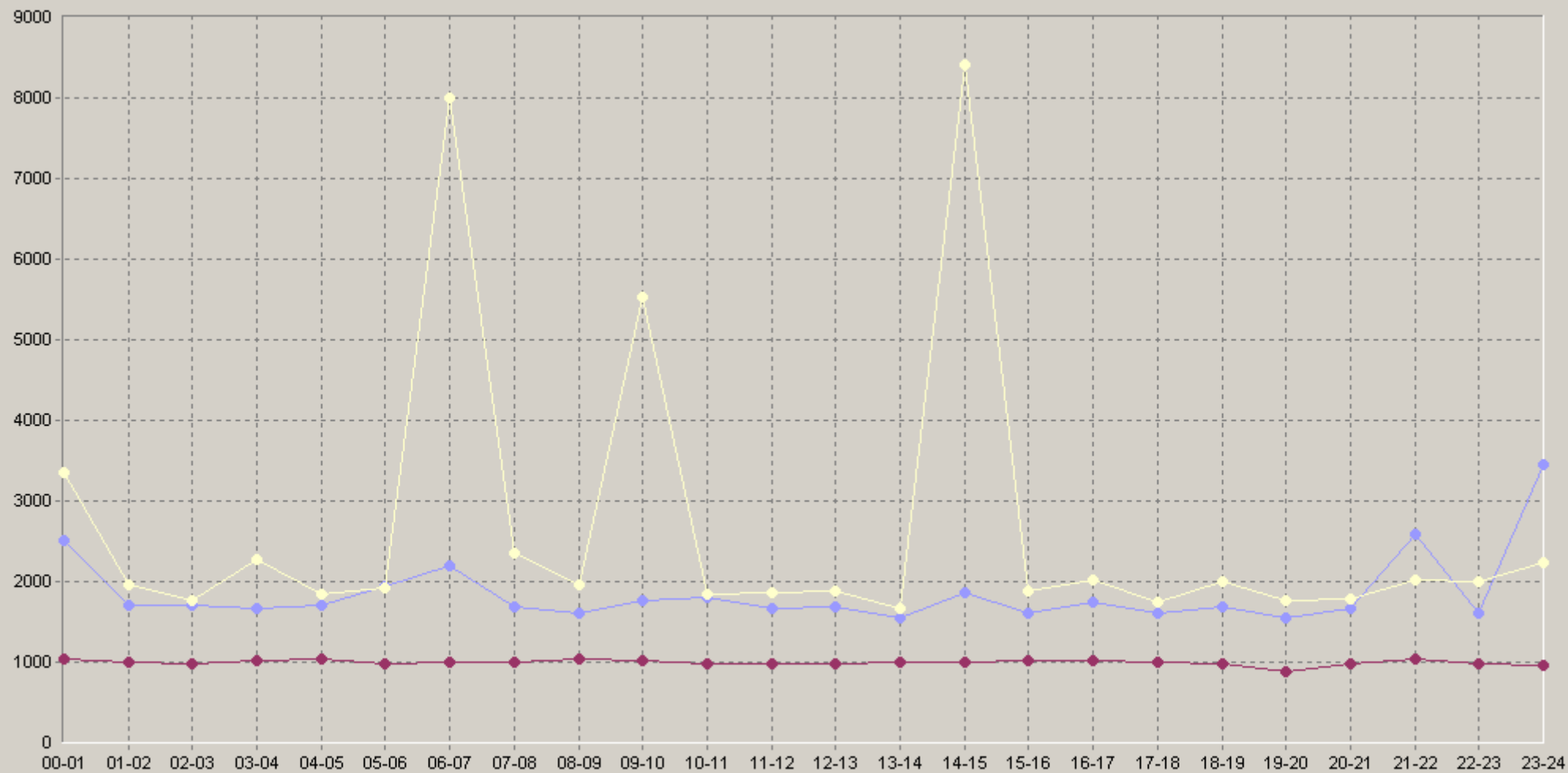
20. MSSQLServerTransactionSimulationTest [sla-on-server1] Total Transaction Time (usec)

		75<	90<			75<	90<
12:00-12:20	1 615 n/a	904 n/a	1 003 n/a	18:00-18:20	1 750 n/a	1 054 n/a	1 948 n/a
12:20-12:40	1 739 n/a	1 024 n/a	1 880 n/a	18:20-18:40	1 668 n/a	963 n/a	1 993 n/a
12:40-13:00	1 711 n/a	992 n/a	1 560 n/a	18:40-19:00	1 641 n/a	978 n/a	1 923 n/a
13:00-13:20	1 341 n/a	976 n/a	1 442 n/a	19:00-19:20	1 220 n/a	874 n/a	920 n/a
13:20-13:40	2 081 n/a	1 046 n/a	8 123 n/a	19:20-19:40	1 705 n/a	898 n/a	1 756 n/a
13:40-14:00	1 251 n/a	928 n/a	1 110 n/a	19:40-20:00	1 735 n/a	881 n/a	1 763 n/a
14:00-14:20	1 775 n/a	986 n/a	1 868 n/a	20:00-20:20	1 620 n/a	989 n/a	1 801 n/a
14:20-14:40	2 082 n/a	978 n/a	8 700 n/a	20:20-20:40	2 103 n/a	1 038 n/a	1 801 n/a
14:40-15:00	1 724 n/a	1 012 n/a	1 813 n/a	20:40-21:00	1 283 n/a	884 n/a	1 369 n/a
15:00-15:20	1 290 n/a	862 n/a	1 086 n/a	21:00-21:20	3 872 n/a	994 n/a	1 828 n/a
15:20-15:40	1 769 n/a	1 076 n/a	1 881 n/a	21:20-21:40	2 207 n/a	1 047 n/a	2 019 n/a
15:40-16:00	1 746 n/a	1 003 n/a	1 873 n/a	21:40-22:00	1 685 n/a	1 042 n/a	1 943 n/a
16:00-16:20	2 122 n/a	1 172 n/a	8 734 n/a	22:00-22:20	1 464 n/a	887 n/a	1 853 n/a
16:20-16:40	1 331 n/a	990 n/a	1 105 n/a	22:20-22:40	1 828 n/a	1 023 n/a	4 881 n/a
16:40-17:00	1 763 n/a	1 002 n/a	1 861 n/a	22:40-23:00	1 537 n/a	956 n/a	1 928 n/a
17:00-17:20	1 723 n/a	1 008 n/a	1 740 n/a	23:00-23:20	7 046 n/a	941 n/a	1 691 n/a
17:20-17:40	1 794 n/a	1 057 n/a	1 465 n/a	23:20-23:40	1 703 n/a	966 n/a	1 842 n/a
17:40-18:00	1 313 n/a	964 n/a	1 014 n/a	23:40-00:00	1 695 n/a	929 n/a	2 228 n/a

MS SQL Server 2000/2005/2008

21.07.2008 20:05 - 23.07.2008 11:17

60. MSSQLServerTransactionSimulationTest.[sla-on-server1] Total Transaction Time (usec)



◆ [BaseLine Avg] MSSQLServerTransactionSimulationTest.[sla-on-server1] Total Transaction Time (usec)(60)(SLA-ON-SERVER1)
 ◆ [BaseLine Percnt75 (<=)] MSSQLServerTransactionSimulationTest.[sla-on-server1] Total Transaction Time (usec)(60)(SLA-ON-SERVER1)
 ◆ [BaseLine Percnt90 (<=)] MSSQLServerTransactionSimulationTest.[sla-on-server1] Total Transaction Time (usec)(60)(SLA-ON-SERVER1)